

The best way to  
discover Switzerland.



**Switzerland.**  
by train, bus and boat.

The Wengernalp Railway in front of the Staubbach Falls in Lauterbrunnen, Berner Oberland





**Switzerland.**  
by train, bus and boat.

# The perfect network.

The Swiss Travel System.



Railjet at the Lake Walensee, St. Gallen



# Train, bus and boat at a glance

## Area of validity Swiss Travel Pass

Swiss Travel Pass (STP) is valid in Switzerland and in 48 other countries.

- Line for Switzerland
- Line for Switzerland (STP)
- Line for Switzerland (STP)
- Line for Switzerland (STP)
- Line for Switzerland (STP)

## Area of validity Swiss Half Fare Card

Swiss Half Fare Card (HF) is valid in Switzerland and in 48 other countries.

- Line for Switzerland
- Line for Switzerland (HF)
- Line for Switzerland (HF)
- Line for Switzerland (HF)
- Line for Switzerland (HF)

## Premium panoramic trains

- Line for Switzerland
- Line for Switzerland (STP)
- Line for Switzerland (STP)
- Line for Switzerland (STP)
- Line for Switzerland (STP)

A full international Swiss Travel Pass is required for travel on international routes such as the Swiss Express, Bernese Express, Gotthard Panorama Express, etc.



**Switzerland.**  
by train, bus and boat.



Scale of kilometers  
 0 10 20 30 km  
 0 10 20 30 miles  
 Validity: 12/2023  
 Due to technical updates not all lines are indicated.  
 Subject to change.



# A perfect network.

- Short distances
- Direct connections to airports
- Regular interval timetables
- InterCity trains at 30-minute intervals
- No seat reservation required



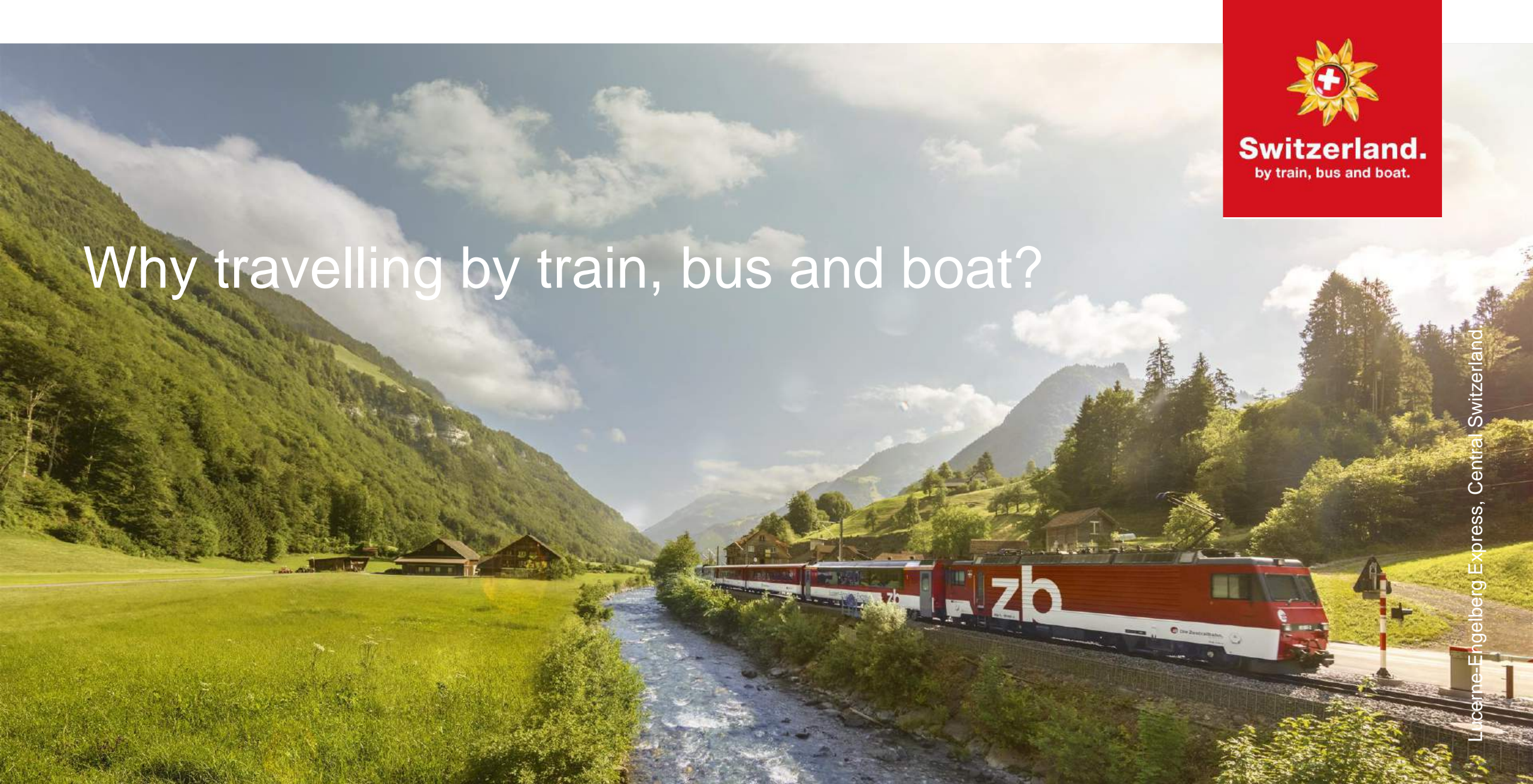
**Switzerland.**  
by train, bus and boat.





**Switzerland.**  
by train, bus and boat.

# Why travelling by train, bus and boat?



Lucerne-Engelberg Express, Central Switzerland.



# Reason Panorama.

Travelling can be so beautiful.



**Switzerland.**  
by train, bus and boat.



- Fascinating landscape and breathtaking views on trains, buses, boats and mountain railways
- Panoramic windows reaching far up to the ceiling on premium panoramic trains
- Experience Switzerland from the train up close
- [Video](#)



# Reason Convenience.

Travelling can be so comfortable.



**Switzerland.**  
by train, bus and boat.



The Swiss Travel System offers comfort at the highest level:

- Generous compartments with comfortable seats offer ample space to stretch one's legs
- On board restaurants offering specialities from all Swiss regions
- Luggage Services
- [Video](#)



# Reason Accessibility.

Travelling can be so simple.



**Switzerland.**  
by train, bus and boat.



- Changing transportation is wonderfully easy in Switzerland – thanks to the densest public transport network in the world
- Regular interval timetables guarantee synchronised connections
- Easy and direct train connections from neighbouring countries
- Video



# Reason Swissness.

Travelling can be so authentic.



**Switzerland.**  
by train, bus and boat.



- Switzerland stands for reliability, quality and safety – this holds true for public transport
- Locals travel by public transport and that's where you meet them
- Do it the Swiss way travel by train, bus and boat
- Video



# Reason Diversity.

Travelling can be so diverse.

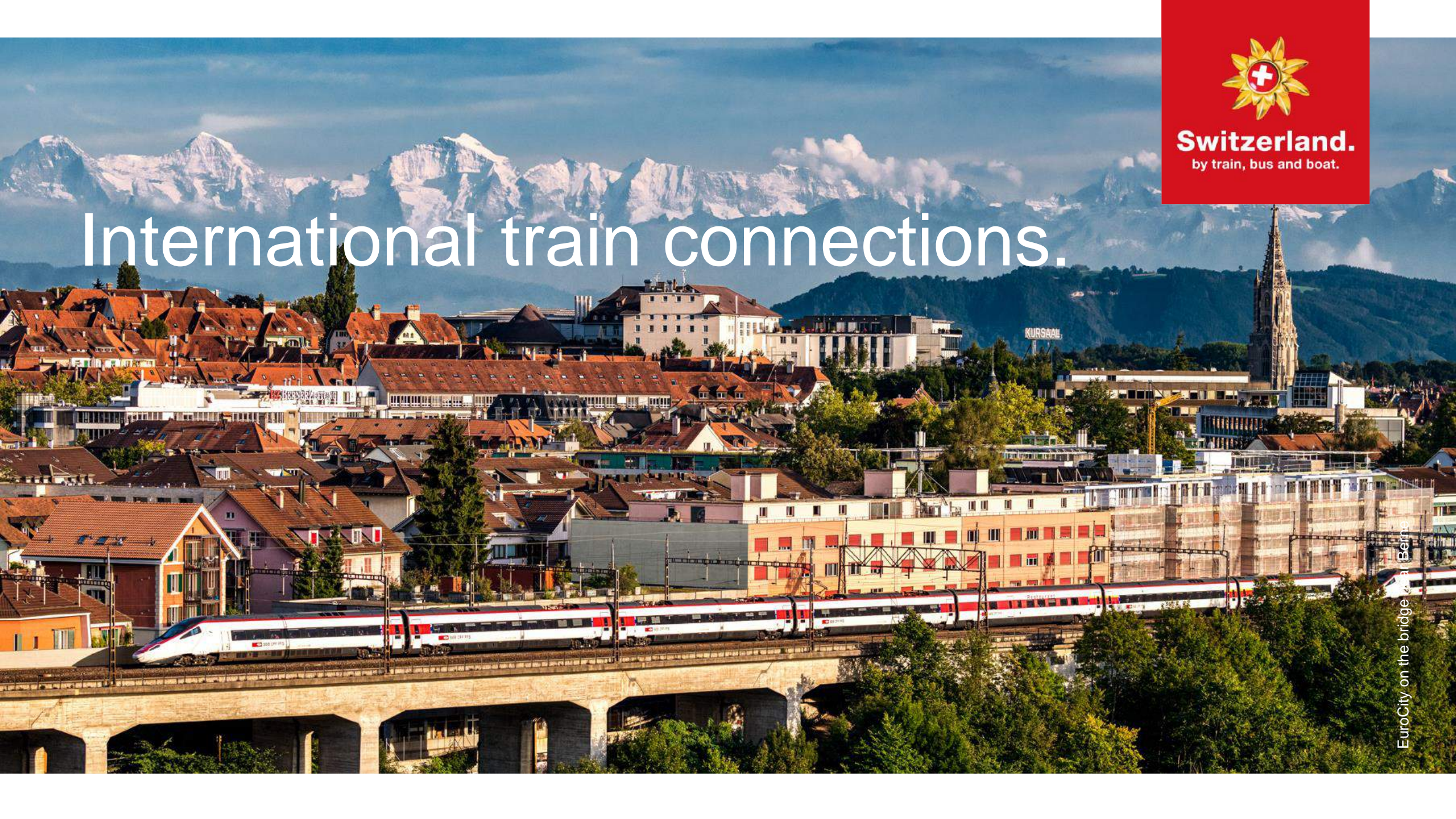


**Switzerland.**  
by train, bus and boat.



- In Switzerland nostalgic and state-of-the-art means of public transport can easily be combined
- Eventful: Rides on theme routes (e.g. cheese train)
- Innovative: extraordinary experiences in public transport (e.g. a dinner in a panoramic cabin of a cableway)
- Video





**Switzerland.**  
by train, bus and boat.

# International train connections.

EuroCity on the bridge at Bern



# Arrival.



**Switzerland.**  
by train, bus and boat.



# InterCity Express: Germany – Switzerland.





# Arrival from Germany.



**Switzerland.**  
by train, bus and boat.

- ICE trains (German Railways DB) serve Basel, Bern, Thun, Interlaken, Zurich and Chur directly
- Travel times:
  - Berlin–Interlaken Ost 10 h
  - Dortmund/Köln–Basel SBB 5 h 10 min
  - Hamburg–Chur 9 h
  - Stuttgart–Zürich 3 h
  - München–Lindau–Zürich 3 h 30 min
  - Frankfurt–Lugano 6 h 25 min







**Switzerland.**  
by train, bus and boat.

# Ticket range ICE, IC/EC.

## **Standard fare (Presale: 180 days prior to departure date)**

- Full flexibility (free choice of train ICE, IC / EC)
- IC / EC tickets can only be used on these trains (change to ICE at a surcharge)
- Seat reservation not included but available and recommended (included in 1st class)





# Ticket range ICE, IC/EC.

## **Saver fare (Presale: 180 days prior to departure date)**

- Saver and supersaver fares (no rebooking or cancellation)
- Valid only on the booked date and train
- Cannot be combined with other discounts
- Limited offer of supersaver tickets available
- Seat reservation not included but available and recommended

## **Information regarding Nightjet**

- Standard and saver night fares available, both tied to a specific train



# EuroCity: Italy – Switzerland.



# Arrival from Italy.



**Switzerland.**  
by train, bus and boat.



- EuroCity trains link Milan to Zurich, Bern, Basel, Geneva, Lausanne, Lucerne and Lugano

- **Travel times:**

- Milano–Basel 4 h 15 min
- Milano–Bern 3 h 05 min
- Milano–Zürich 3 h 15 min
- Milano–Luzern 3 h 30 min
- Milano–Genève 4 h
- Venezia–Genève 7 h
- Genua–Zürich 5 h 20 min
- Bologna–Zürich 6 h





# Ticket range EuroCity.

## **Standard fare (Presale: 180 days prior to departure date)**

- Valid only on the booked date and train
- Seat reservation required and included

## **Saver fares: Smart and Smart 2 (Presale: 180 days prior to departure date)**

- Limited offer of saver fares within pre-defined price ranges
- Not offered on all routes, valid only on the booked date and train
- Smart: presale up to **7 days** prior to departure date, no rebooking
- Smart 2: presale up to **3 days** prior to departure date, flexible rebooking (date and/or train) against surcharge possible (balance payment to regular ticket)
- Seat reservation required and included
- Cannot be combined with other discounts
- Refund not possible





ÖBB railjet: Austria – Switzerland.



# Arrival from Austria.



**Switzerland.**  
by train, bus and boat.

- Night trains link Graz, Vienna and Villach to Zurich
- ÖBB Railjet runs to Switzerland's largest cities several times daily
- Travel times:
  - Wien–Zürich 7 h 50 min
  - Salzburg–Zürich 5 h 25 min
  - Innsbruck–Zürich 3 h 35 min
  - Bregenz–Zürich 1 h 50 min
  - Graz–Zürich 9 h 35 min







# Ticket range Railjet.

## **Standard fare (Presale: 180 days prior to departure date)**

- Full flexibility (free choice of train)
- Seat reservation not included but available and recommended (included in Business Class)

## **Saver fare (Presale: 180 days prior to departure date)**

- “Sparschiene” tickets
- Valid only on the booked date and train
- Cannot be combined with other discounts
- Limited offer of saver tickets available
- Seat reservation required and not included (payable separately depending on the train)





TGV Lyria: France – Switzerland.



# Arrival from France.



**Switzerland.**  
by train, bus and boat.



- TGV Lyria trains link Paris and Marseille to the Swiss cities of Geneva, Lausanne, Basel and Zurich several times per day

- **Travel times:**

- Paris–Basel 3 h 05 min
- Paris–Genève 3 h 10 min
- Paris–Zürich 4 h 05 min
- Paris–Lausanne via Jura 3 h 40 min
- Paris–Lausanne via Genève 3 h 40 min
- Marseille–Genève 3 h 30 min (only July-August)





# Ticket range TGV Lyria.

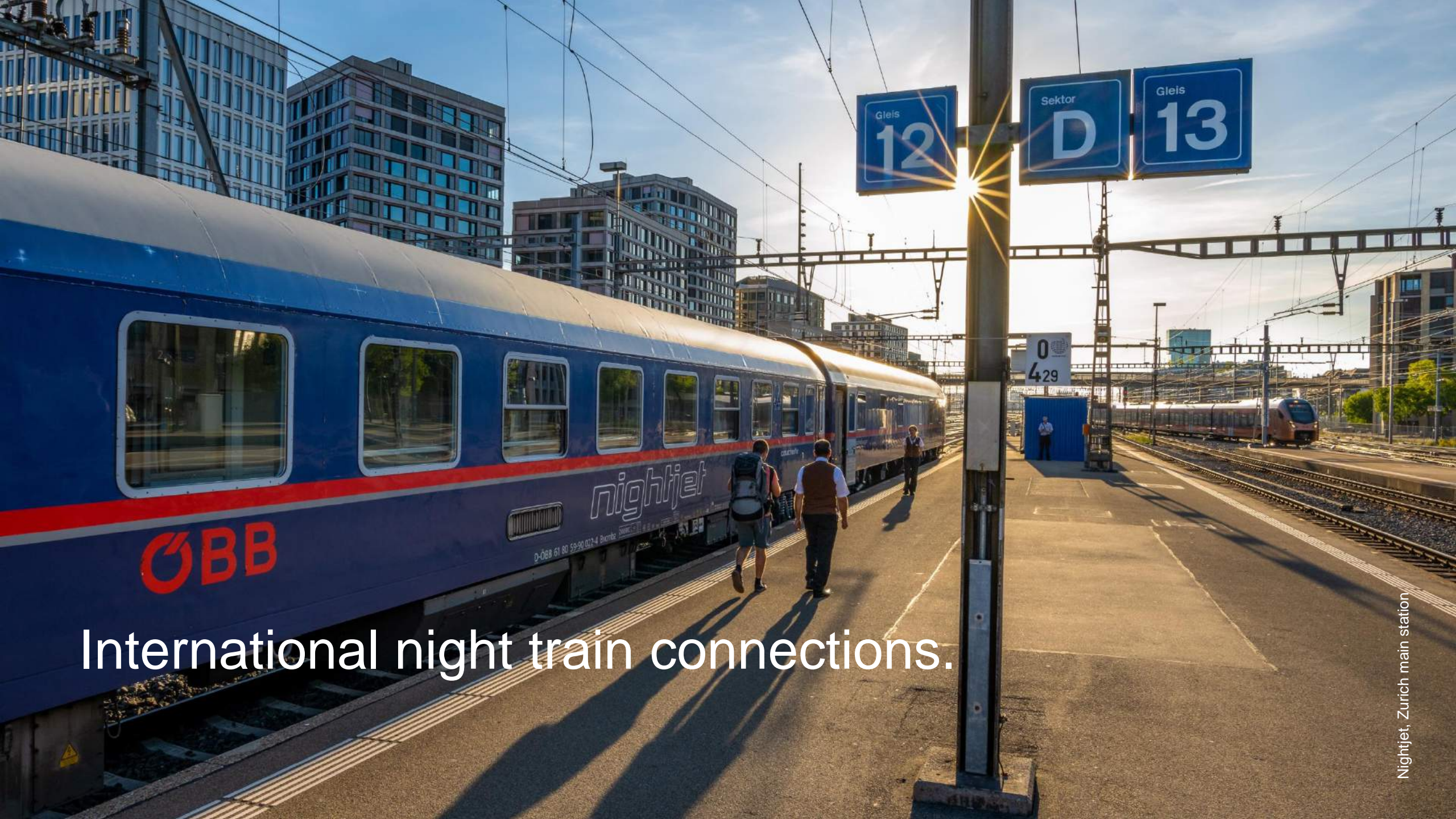
## **Standard fare (Presale: 180 days prior to departure date)**

- Full flexibility (free choice of train on a chosen date and route)
- Seat reservation included (only on booked train)
- Standard fare available in all three service classes

## **Saver fare (Presale: 180 days prior to departure date)**

- Partial flexibility in the classes Standard and Standard 1ère (rebooking possible at a surcharge)
- No-flexibility offer available only in Standard class (valid only on the booked date and train)
- Seat reservation required and included
- Cannot be combined with other discounts
- Limited offer of saver tickets available





International night train connections.



# International night train connections.



**Switzerland.**  
by train, bus and boat.

## Nightjet (direct connections)

- Amsterdam–Basel–Zürich
- Berlin–Basel–Zürich
- Hamburg–Basel–Zürich
- Wien–Salzburg–Zürich
- Graz–Innsbruck–Zürich

Travel duration:

11 h 40 min  
12 h 25 min  
12 h  
10 h 55 min  
10 h 55 min

## EuroNight (direct connections)

- Budapest–Wien–Zürich
- Praha–Salzburg–Zürich
- Praha–Dresden–Leipzig–Zürich
- Ljubljana–Innsbruck–Zürich
- Zagreb–Ljubljana–Zürich

Travel duration:

11 h 40 min  
14 h  
14 h 40 min  
11 h 15 min  
13 h 40 min





# International night train connections.



**Switzerland.**  
by train, bus and boat.

## Nightjet and EuroNight

- Categories:
  - Sleeping car (standard or deluxe compartments)
  - Couchette car (4- or 6-berth or private compartement)
  - Seating car (in a 6-person compartement ot in the open coach)
- Booking:
  - Online or at the ticket counter
  - Presale: 180 days



Family in the sleeping coach of the Nightjet





**Switzerland.**  
by train, bus and boat.

The Swiss Travel System tickets and passes.

Couple at the train station next to the ticket office, Zürich



# Benefits of the Swiss Travel Pass.



**Switzerland.**  
by train, bus and boat.

- **Easy:** A single ticket for the use of train, bus and boat as well as other public transportation services (from/to airports included)
- **Value-for-money:** Premium panoramic trains are included (except reservation surcharges) as well as selected mountain destinations
- **Flexible:** A suitable ticket for all customer needs
- **Family-friendly:** Own children travel free of charge up to their 16th birthday
- **Museums:** Free admission to more than 500 museums



# Swiss Travel System passes overview.



**Switzerland.**  
by train, bus and boat.

---

**Swiss Travel Pass.**



---

Unlimited travel by train, bus and boat as well as free admission to more than 500 museums. In addition, 50% discount on most mountain excursions. Also available as Flex and Youth option.

---

**Swiss Half Fare Card.**



---

For one month, 50% discount on regular public transport fares for CHF 120. Also combinable with Swiss Travel Pass (Flex).

---

**Swiss Family Card.**



---

Children from their 6th to their 16th birthday travel free of charge with the Swiss Travel Card.



# Swiss Travel Pass / Swiss Travel Pass Flex.



**Switzerland.**  
by train, bus and boat.

- Unlimited travel by train, bus and boat
- Unlimited travel on premium panorama trains (seat reservation fees and/or surcharges apply)
- Full coverage for mountain excursions: Rigi, Stanserhorn and Stoos
- Up to 50% discount on many other mountain excursions
- Unlimited use of public transport networks of more than 90 urban areas
- Free admission to more than 500 museums
- Available in 1st and 2nd class for 3, 4, 6, 8 or 15 days (Flex: days freely selectable within a month)
- Children from their 6th to their 16th birthday accompanied by at least one parent (holding a Swiss Travel System ticket) travel free of charge with the free Swiss Family Card
- Children under 6 years of age travel free of charge
- Available as e-ticket



# Swiss Half Fare Card.



**Switzerland.**  
by train, bus and boat.

- **Coverage**

Up to 50% discount on journeys by train, bus and boat, as well as most mountain railways and on the public transport networks of more than 90 urban areas

- **Validity**

- 1 month

- **Good to know**

- Available as e-ticket



# Swiss Family Card.



- **Coverage**

- Children from their 6th to their 16th birthday travel free of charge when accompanied by at least one parent (holding a valid Swiss Travel System ticket)
- Children under 6 years of age travel free of charge
- The Swiss Family Card is valid for travel by train, bus and boat as well as mountain railways and museums
- The Swiss Family Card can be obtained free of charge at all valeted Swiss stations and when booking online

- **Validity**

1 month

- **Good to know**

- Available as e-ticket

# Museum Pass.



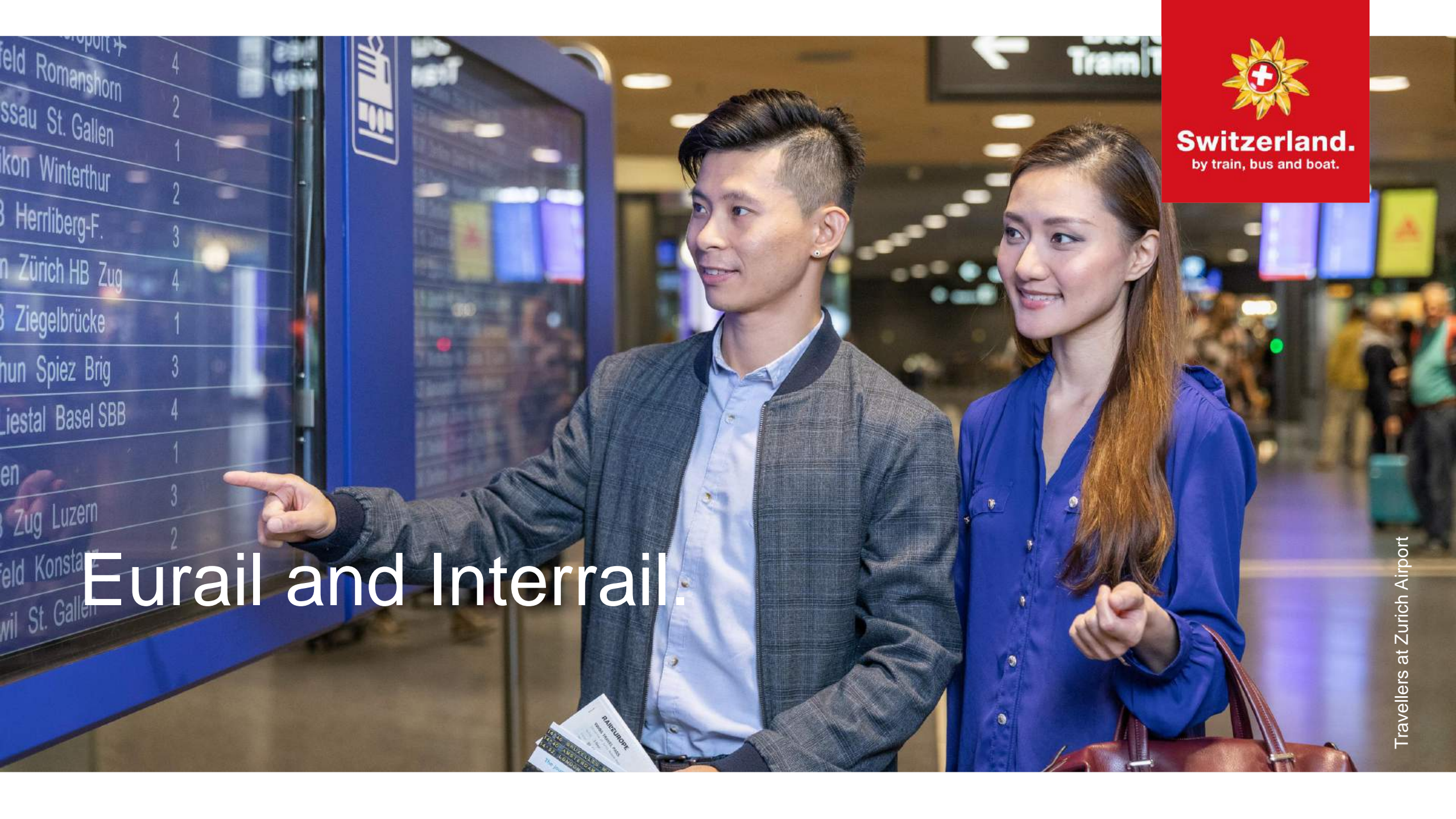
**Switzerland.**  
by train, bus and boat.

- Every purchase of a Swiss Travel Pass or Swiss Travel Pass Flex automatically includes a Swiss Museum Pass.
- Free admission to more than 500 museums nationwide e.g.:
  - Chillon Castle (Montreux)
  - Glacier Garden (Lucerne)
  - Matterhorn Museum (Zermatt)
  - Olympic Museum (Lausanne)
  - Abbey Library (St. Gallen)
  - Swiss Museum of Transport (Lucerne) – 50% discount
  - History Museum & Einstein Museum (Berne)
  - And many more



Matterhorn Museum, Zermatt, Valais





**Switzerland.**  
by train, bus and boat.

# Eurail and Interrail.

Travellers at Zurich Airport

# Eurail and Interrail.



Eurail and Interrail provide offers for trouble-free cross-border travels throughout Europe.

- Eurail for persons with permanent residence outside Europe and
- Interrail for persons with permanent residence in Europe

The Eurail/Interrail global pass is valid in more than 30 European countries.



# Eurail and Interrail – global pass.



**Switzerland.**  
by train, bus and boat.

- **Services in Europe**
  - Unlimited travel in more than 30 European countries
- **Services in Switzerland**
  - Unlimited travel on most railway lines
  - 50% discount on some lakes
  - 25% discount on some mountain excursions
  - Available for 1st and 2nd class
  - Discounts for young travellers and senior citizens
  - Max. 2 children from the 4th to the 12th birthday travel free of charge with each adult
- **Validity**
  - Flexpass for 4, 5 or 7 days within one month
  - Flexpass for 10 or 15 days within two months
  - 15 or 22 days as well as 1, 2 and 3 subsequent months

# Swiss Travel Pass or Eurail / Interrail Pass?



**Switzerland.**  
by train, bus and boat.

Premium panoramic trains	Swiss Travel Pass	Eurail <sup>1)</sup> / Interrail <sup>2)</sup>
Bernina Express <sup>3)</sup> Chur/St. Moritz–Poschiavo–Tirano	100%	100%
Glacier Express <sup>3)</sup> Zermatt–Visp / Brig–Chur–Davos / St. Moritz	100%	100%
GoldenPass Express <sup>3)</sup> Montreux-Zweisimmen-Interlaken	100%	100%
Gotthard Panorama Express <sup>3)</sup> Luzern–boat–Flüelen Flüelen–Bellinzona–Lugano	100% 100%	50% 100%
Luzern–Interlaken Express Luzern–Brünig–Interlaken Ost	100%	100%
Scenic routes	Swiss Travel Pass	Eurail <sup>1)</sup> / Interrail <sup>2)</sup>
Lake Lucerne Cruises	100% <sup>4)</sup>	50% <sup>4)</sup>
BLS RegioExpress Lötschberger	100%	100%
BLS Navigation services on Lakes Thun and Brienz	100% <sup>4)</sup>	100% <sup>4)</sup>
GoldenPass Panoramic / GoldenPass Belle Epoque	100%	100%
Palm Express	100%	-
Central Alps Passes PostBus Route	100%	-
Treno Gottardo	100%	100%
Vigezzina-Centovalli-Bahn	100%	100%
Voralpen-Express	100%	100%

1) Available only to persons permanently resident outside Europe.

2) Available only to persons permanently resident inside Europe.

3) Certain trains / offers are subject to reservation fees and / or surcharge. Such fees are not included in the pass price.

4) Valid on all scheduled boats. Discount for special cruises on request.





**Switzerland.**  
by train, bus and boat.

Mountain excursions	Swiss Travel Pass	Eurail <sup>1)</sup> / Interrail <sup>2)</sup>
Glacier 3000	50%	20%
Gornergrat	50%	-
Jungfraujoch	25%	25%
Rigi	100%	50%
Schilthorn	50%	25%
Brienzer Rothorn	50%	-
CabriO Stanserhorn	100%	25%
Grindelwald First	50%	25%
Harder Kulm	50%	25%
Matterhorn Glacier Paradise	50%	-
Monte Generoso	50%	-
Pilatus	50%	50%
Rochers-de-Naye		
Montreux–Haut-de-Caux	100%	-
Haut-de-Caux–Rochers-de-Naye	50%	-
Säntis	50%	50%
Schynige Platte	50%	25%
Stoos	100%	-
Sunnegga, Zermatt	50%	-
Testa Grigia	50%	-
Titlis	50%	25%

1) Available only to persons permanently resident outside Europe.  
2) Available only to persons permanently resident inside Europe.

# Swiss Travel Pass or Eurail / Interrail Pass?



**Switzerland.**  
by train, bus and boat.

Public waterway services	Swiss Travel Pass	Eurail <sup>1)</sup> / Interrail <sup>2)</sup>
BLS – Lake Geneva and Brienz	100%	100%
BSG – Lake Biel	100%	50%
CGN – Lake Geneva	100%	50%
LNM – Lakes Neuchâtel/Murten	100%	50%
SBS – Lake Constance (Swiss part)	100%	50%
SGH – Lake Hallwil	100%	–
SGV – Lake Lucerne	100%	50%
SGZ – Lake Zug	100%	–
SNL – Lake Lugano	100%	–
URh – Lower Lake Constance and Rhine (Kreuzlingen – Schaffhausen)	100%	50%
ZSG – Lake Zurich	100%	50%

1) Available only to persons permanently resident outside Europe.  
2) Available only to persons permanently resident inside Europe.



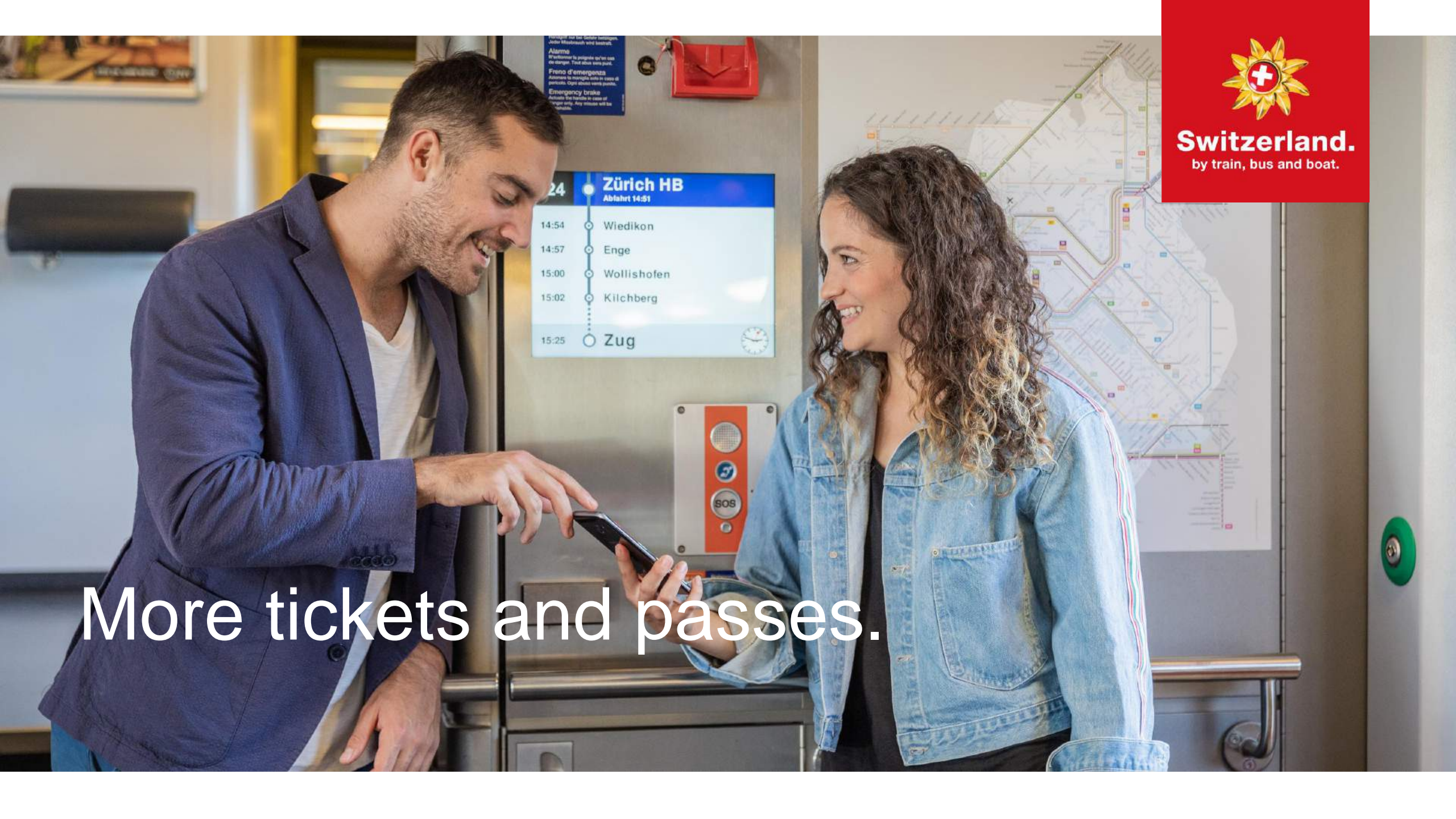
# Swiss Travel Pass or Eurail / Interrail Pass?



**Switzerland.**  
by train, bus and boat.

Other public transport lines	Swiss Travel Pass	Eurail <sup>1)</sup> / Interrail <sup>2)</sup>
All Swiss PostBus routes	100%	–
Beatenbucht–Beatenberg	100%	–
Beckenried-Klewenalp/Emmetten-Stockhütte	100%	–
Blatten b. Naters–Belalp	100%	–
Engelberg–Ristis (Brunni)	100%	25%
Le Châble–Verbier	100%	–
Ligerz–Prêles	100%	25%
Linthal–Braunwald	100%	–
Lugano–Ponte Tresa	100%	–
Raron–Unterbäch	100%	–
Sierre–Crans-Montana	100%	–
St-Imier–Mont-Soleil	50%	25%
Stöckalp–Melchsee-Frutt	50%	25%
Zürich HB–Sihlwald/Uetliberg	100%	–
Public transport network in more than 90 towns and cities, e.g. Basel, Berne, Geneva, Lausanne, Lucerne, Lugano, Zurich	100%	–

1) Available only to persons permanently resident outside Europe.  
2) Available only to persons permanently resident inside Europe.



Alarme  
Freno d'emergenza  
Emergency brake

Zürich HB	
Abfahrt 14:51	
14:54	Wiedikon
14:57	Enge
15:00	Wollishofen
15:02	Kilchberg
15:25	Zug



**Switzerland.**  
by train, bus and boat.

More tickets and passes.



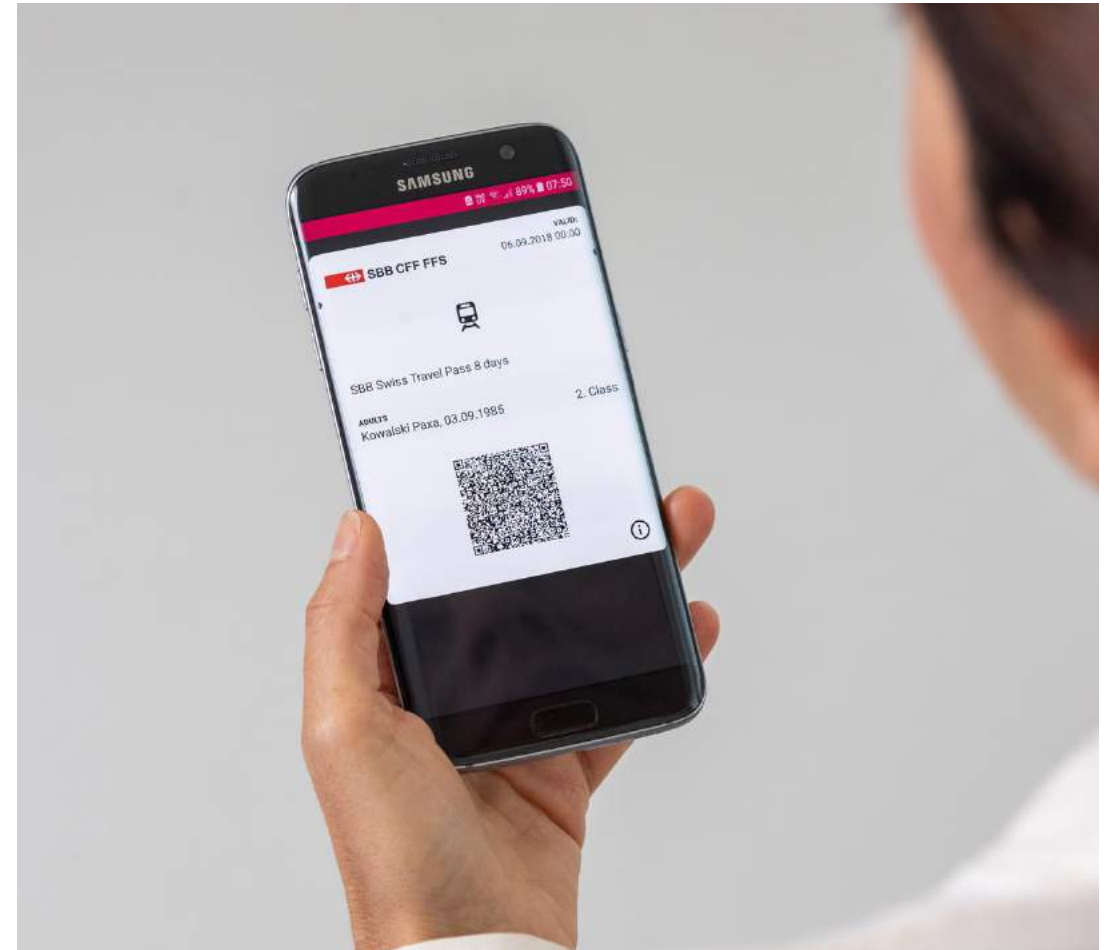
# Point-to-point tickets.



**Switzerland.**  
by train, bus and boat.

Single journey, return trip or round trip – these are the point-to-point tickets available for any given route in the desired class.

Holders of a Swiss Half Fare Card are eligible for a discount of up to 50%.



# Supersaver tickets.



**Switzerland.**  
by train, bus and boat.



- Supersaver tickets are available for 1st and 2nd class on numerous Swiss railway and other public transport lines
- Only valid on a chosen travel day and for a specifically selected public transport connection
- Offer according to availability
- Guests receive up to 70% discount on standard and reduced\* fares (\*e.g. with Swiss Half Fare Card)
- Special regulations apply
- **Supersaver tickets can neither be exchanged nor refunded**



# 1-day travelpasses.



**Switzerland.**  
by train, bus and boat.

- Can be obtained in combination with a Swiss Half Fare Card
- The ideal ticket for daytrips by train, bus and boat as well as public transport in most Swiss urban areas
- Are available for 1st and 2nd class
- Using a Saver Day Pass, guests travel at an even more favourable fare. The earlier a Saver Day Pass is bought, the lower the price



# Group tickets.



**Switzerland.**  
by train, bus and boat.



- With a group ticket, groups of 10 or more persons travel cheaper on public transport: They receive a 30% discount
- Various types of group tickets are available for 1st and 2nd class:
  - single journey
  - return trip
  - round trip
- Holders of a Swiss Half Fare Card are eligible for a discount of up to 50% on the group price



# Regional travel system tickets.



**Switzerland.**  
by train, bus and boat.

- There are roughly 20 regional traffic and fare associations in Switzerland
- Regionally easier and cheaper by public transport
- A ticket for travel on the networks of various transport companies





# Regional passes.



**Switzerland.**  
by train, bus and boat.

Wengernalpbahn Railway in winter time, Bernese Oberland



# Berner Oberland Pass.



**Switzerland.**  
by train, bus and boat.

- Unlimited travel within the area bordered by the corner points Bern, Luzern, Brig and Gstaad
- 3, 4, 6, 8 or 10 consecutive days
- Many mountain railways/cableways, boat lines and PostBuses (e.g. Grimsel and Susten passes).
- Season lasts from  
01 Apr – 31 Dec 2024



Niesen Railway near Thun, Bernese Oberland

# Regional Pass Lake Geneva-Alps.



**Switzerland.**  
by train, bus and boat.



Castle Chillon and CGN boat, Veytaux, Lake Geneva region

- 5-day Regional Pass: unlimited travel on two individually selectable days, 50% discount on the remaining three days
- 7-day Regional Pass: unlimited travel on three individually selectable days, 50% discount on the remaining four days
- No surcharges from/to Geneva airport, boat lines on Lake Geneva and GoldenPass trains



# Tell-Pass – Central Switzerland.



**Switzerland.**  
by train, bus and boat.

- Unlimited travel on 2, 3, 4, 5 or 10 consecutive days throughout Central Switzerland
- Unlimited travel on railways, buses, boats and many mountain railways/cableways
- Available in winter (01 Nov 2023 – 31 Mar 2024) as well as summer (01 Apr – 31 Oct 2024)
- Only available in 2nd class



Morning mood on Mount Pilatus, Central Switzerland

# City Travel Pass – Zürich Card.



**Switzerland.**  
by train, bus and boat.



Church Grossmünster, Zurich, © Zürich Tourismus

During 24 or 72 hours:

- Unlimited 2nd class travel on all forms of public transportation
- Includes the Mini Lake Cruise, Short Lake Cruise and Limmat River Cruise
- Free or reduced admission to the most popular museums
- 50% discount on the Zurich Old Town Walking Tour and other public city tours
- More than 70 other experiences





**Switzerland.**  
by train, bus and boat.

# Premium panoramic trains.

Bernina Express on the Wiesener Viaduct, Graubünden



# Bernina Express.

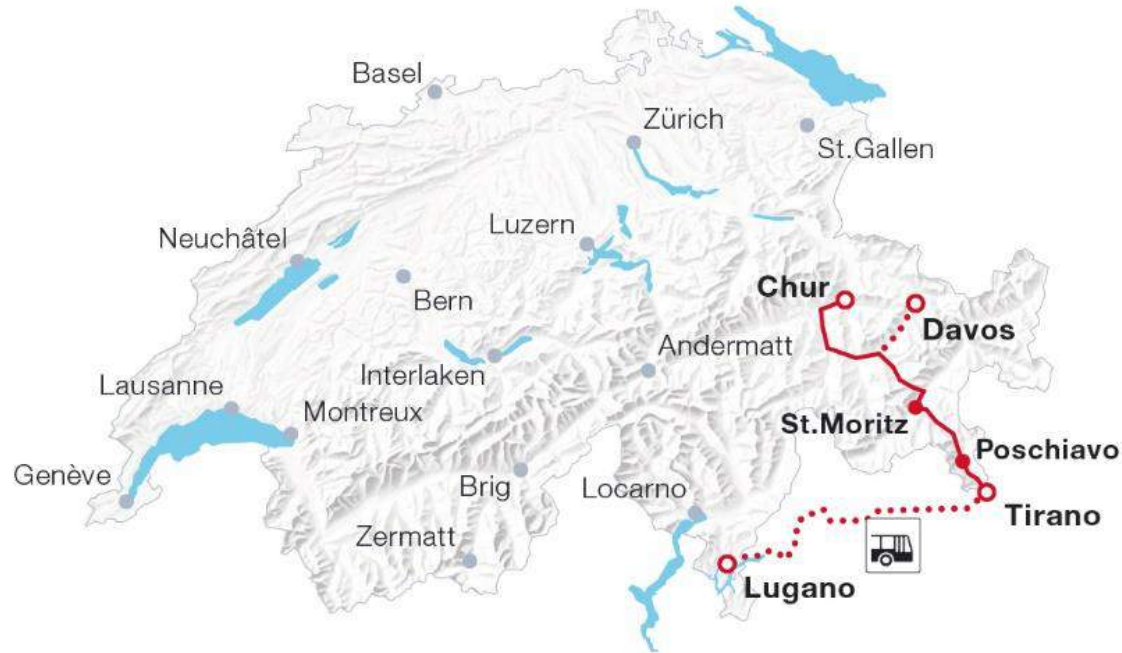


# Bernina Express.

## From Chur to Tirano (Italy) and Lugano



**Switzerland.**  
by train, bus and boat.



- **Route:** Chur/St. Moritz–Poschiavo–Tirano–Lugano
- **Duration:** 4 h 21 min (Chur–Tirano), 3 h 20 min (bus Tirano–Lugano)
- **Distances:** Chur–Tirano 148 km, Tirano–Lugano: 90 km

# Bernina Express.



**Switzerland.**  
by train, bus and boat.

## Highlights

- Landwasser Viaduct
- UNESCO World Heritage Rhaetian Railways
- Bernina Glaciers with Alp Grüm
- Lago di Lugano
- Circular Viaduct Brusio
- Bernina Express Bus with Tirano, Lake Como and Lake Lugano



Bernina Express at the Morteratsch Glacier, Grisons



# Bernina Express.



**Switzerland.**  
by train, bus and boat.

## Excursion tips

- Chur and surroundings
  - Arosa Line
  - Railway Adventure Trail
  - Albula Railway Museum
- Lugano and surroundings
  - Magnificent Ciani Park
  - Palm Express
  - Gandria (Swiss Smugglers' Museum)
  - Splash & Spa
  - Monte San Giorgio (1,097 metres)
  - Monte San Salvatore (912 metres)



Albula Railway Museum, Bergün, Graubünden

# Bernina Express.

## Good to know

- Connections in both directions, summer and winter
  - Bernina Express Bus (Tirano–Lugano) from February to November
- Seat reservation required, surcharge applies
  - Short route (St. Moritz–Tirano): CHF 28 all season
  - Long route (Chur–Tirano): CHF 32 low season
  - CHF 36 main season
  - Bernina Express Bus (Tirano–Lugano): CHF 14 low season
  - CHF 16 main season
- Passport or Identity Card required to enter Italy
- Lunchtime in Poschiavo, Le Prese or Tirano (in Italy)



# Glacier Express.





# Glacier Express.

## From St. Moritz to Zermatt



**Switzerland.**  
by train, bus and boat.



- **Route:** St. Moritz–Chur–Andermatt–Brig–Visp–Zermatt
- **Duration:** about 8 h
- **Distance:** 291 km with 291 bridges and 91 tunnels



# Glacier Express.



**Switzerland.**  
by train, bus and boat.

## Highlights

- Zermatt – surrounded by 38 4,000-metre Alpine peaks
- Kipfen Gorge
- Stockalper Palace in Brig
- Benedictine monastery in Disentis
- Rhine Gorge
- Landwasser Viaduct



Glacier Express in the Mattertal valley

# Glacier Express.



**Switzerland.**  
by train, bus and boat.

## Excursion tips

- St. Moritz and surroundings
  - 12th century leaning tower
  - Mount Corvatsch (3,451 metres)
  - Lake Sils
- Chur and surroundings
  - Brambrüesch (1,595 metres)
  - Rhine Gorge
- Zermatt
  - Zermatlantis – Matterhorn Museum
  - Gornergrat (3,131 metres)
  - Matterhorn Glacier Paradise (3,883 metres)



Glacier Express between Andermatt and Oberalp



# Glacier Express.



**Switzerland.**  
by train, bus and boat.

## Good to know

- Minimum 2 connections per day in both directions
- No Glacier Express trains operate from 13 Oct – 08 Dec 2024
- Seat reservation required, surcharge applies:
  - Long route: CHF 49
  - Short route: CHF 44
- Meal served at passenger's seat: 3-course meal, daily menu or à la carte service
- Touristic announcements in 6 languages (headphones), 2 music channels
- Passenger information system with integrated infotainment in 8 languages



# Glacier Express Excellence Class.



Excellence Class in Glacier Express.



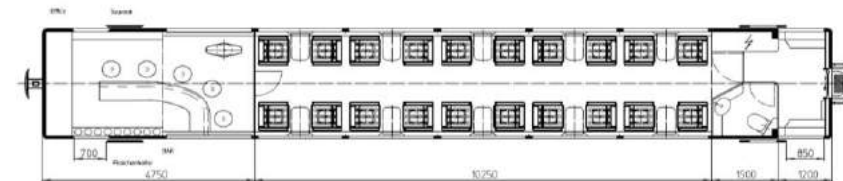
# Excellence Class – Coaches.



**Switzerland.**  
by train, bus and boat.



- 2 x 20 seats per day
- Lounge seating
- Excellence Class Bar exclusively for guests in Excellence Class
- Premium seats & equipment
- Tablet for onboard entertainment
- Exclusive restroom



# Excellence Class – Service.



**Switzerland.**  
by train, bus and boat.

- Exclusive oncierge service
- Welcome desk & check-in outside the Excellence coach
- Luggage transport (from/to station platform)
- Catering included:
  - Champagne and aperitif platter for welcome
  - Seasonal, regional & high-quality 5-course menu incl. wine accompaniment
  - Soft drinks / mineral water / coffee
- Onboard entertainment





# Excellence Class – Facts.



**Switzerland.**  
by train, bus and boat.



## Offer

- St. Moritz – Zermatt
- Zermatt – St. Moritz

## Timetable

- Excellence Class runs from 9 Dec 2023 – 12 Oct 2024 (except 25 Mar – 12 Apr 2024)

## Price & Booking

- Ticket 1st Class → Supplement CHF 470
- The Glacier Express standard pre-booking period of 93 days also applies to the Excellence Class



# GoldenPass Express.





# GoldenPass Express.

## From Montreux to Interlaken



**Switzerland.**  
by train, bus and boat.



- **Route:** Montreux–Gstaad–Zweisimmen–Interlaken
- **Duration:** 3 h 15 min
- **Distance Montreux–Interlaken:** 115 km

# GoldenPass Express.



**Switzerland.**  
by train, bus and boat.

## Highlights

- Glacier 3000 (2,965 m a.s.l.)
- Gstaad
- Château-d'Oex: Cheese dairy and yearly hot ballooning meeting
- Vineyards UNESCO
- Castles “Château Chillon” & “Château Châtelard”
- Montreux



GoldenPass Express in Rougemont, Waadt



GoldenPass Express Prestige.

Prestige Class im GoldenPass Express.

# GoldenPass Express.

## Prestige

- Elevated comfort
  - Heated leather seats
  - Footrest
  - Rotatable seats by 180 degrees (upon request)
  - Seats raised by 40 centimetres
- Catering service (must be pre-ordered)
  - Caviar and a glass of champagne for CHF 89
  - „Mountain“ or veggie plate with mineral water or wine/beer for CHF 27
  - Breakfast box for CHF 12



**Switzerland.**  
by train, bus and boat.



Prestige Class im GoldenPass Express



# GoldenPass Express.

## Technical features



**Switzerland.**  
by train, bus and boat.

### **Switch from the metric track to the standard track**

In terms of technology, this train is unique worldwide as it switches from the metric track (between Montreux and Zweisimmen) to the normal track (between Zweisimmen and Interlaken) in a few seconds.

In addition, the coach is raised by 20 cm, thus adapting to the higher platform.

This 100% Swiss achievement was made possible by a revolutionary variable gauge and a gauge ramp in Zweisimmen.

# GoldenPass Express.



## Good to know

- Year-round operation
- Three travel classes: Prestige, 1st and 2nd class
- The journey is fully covered by the Swiss Travel Pass and other tickets
- Seat reservations are mandatory in the Prestige and highly recommended in 1st and 2nd class

	Seat reservation
Prestige	CHF 49
1st and 2nd class	CHF 20

- Changing trains in Zweisimmen no longer necessary, thanks to the rail switch from the metric to the normal track
- Snacks and drinks are available on board in all classes. Availability is not guaranteed without prior reservation. Reservations via webshop are highly recommended.



# Gotthard Panorama Express.





# Gotthard Panorama Express.

## From Lucerne to Bellinzona / Lugano



**Switzerland.**  
by train, bus and boat.



- **Route:** Lucern–Lake Lucerne–Flüelen–Gotthard–Bellinzona–Lugano
- **Duration:** around 5 h 30 min
- **Distance Lucern–Lugano:** 182 km



# Gotthard Panorama Express.



**Switzerland.**  
by train, bus and boat.

## Highlights

- Kreuztrichter – where all 4 arms of Lake Lucerne converge
- Scenic Seelisberg
- Baroque church of Wassen
- Giornico – village with 7 churches
- Magadino Plain



Travellers changing from the boat to the panoramic train, Central Switzerland

# Gotthard Panorama Express.



**Switzerland.**  
by train, bus and boat.

## Good to know

- Great experiences, presentations and information about the region, its myths and legends
- Runs from April to October
  - 20 Apr – 20 Oct 2024, every Tuesday to Sunday
- Reservation required, incl. surcharge of CHF 24
- Ride in 1st class panoramic coaches, bookings in 2nd class are not available
- Multilingual onboard route information
- Luggage service between Lucerne and Lugano



# Luzern–Interlaken Express.



# Luzern–Interlaken Express.

The fascinating panorama journey.



**Switzerland.**  
by train, bus and boat.



- **Route:** Luzern–Interlaken
- **Duration:** 1 h 50 min
- **Distance:** 97.8 km



# Luzern–Interlaken Express.



**Switzerland.**  
by train, bus and boat.

## Highlights

- City of Lucerne
- Lake Lungern
- Brünig Pass and Brünig safari
- Meiringen and the case “Sherlock Holmes” / Reichenbach Falls
- Woodcarving in Brienz
- Brienz Rothorn (2,351 m a.s.l.)
- The turquoise blue Lake Brienz



Brienz Rothorn Bahn in summer, Bernese Oberland

# Luzern–Interlaken Express.



## Good to know

- Interlaken Ost–Luzern: Hourly from 07.04 h to 20.04 h
- Luzern–Interlaken Ost: Hourly from 06.06 h to 21.06 h
- Panoramic windows in 1<sup>st</sup> as well as 2<sup>nd</sup> class
- À la carte restaurant “Bistro”
- Seat reservation recommended but not required; reservation fee per person and direction:
  - 01 Jan – 08 May 2024: CHF 12
  - 09 May – 27 Oct 2024: CHF 16
  - 28 Oct – 14 Dec 2024: CHF 12





**Switzerland.**  
by train, bus and boat.

# The Grand Train Tour of Switzerland.



GoldenPass Belle Époque above Lake Geneva



# The Grand Train Tour of Switzerland...



**Switzerland.**  
by train, bus and boat.

- combines the most beautiful train lines in Switzerland into one route
- merges **Swiss cities and Alpine resorts** into one magnificent round trip
- offers opportunities to visit **landmarks, splendid natural scenery** as well as **UNESCO World Heritage Sites**
- Provides opportunities for numerous **mountain excursions**
- allows to immerse oneself in the multifarious world of **Swiss museums**
- runs along **11 large lakes**, passes through all **4 language regions of Switzerland** and traverses **3 Alpine passes**
- can be travelled **year-round** in either direction
- covers a total length of **1,280 kilometres / 795 miles**

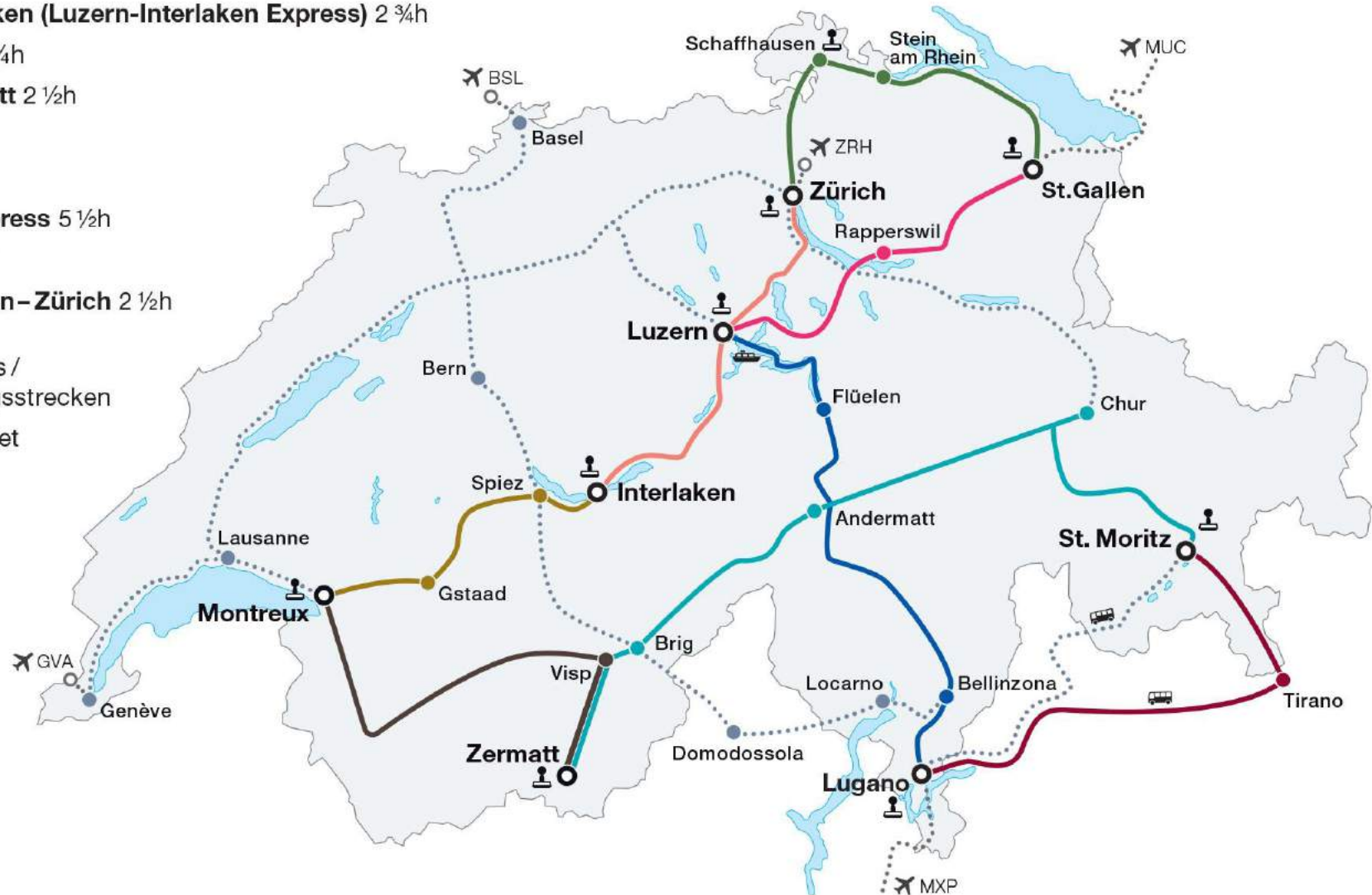


# Grand Train Tour of Switzerland.



**Switzerland.**  
by train, bus and boat.

- Zürich–Luzern–Interlaken (Luzern-Interlaken Express) 2 ¾h
- GoldenPass Express 3 ¼h
- Montreux–Visp–Zermatt 2 ½h
- Glacier Express 7 ¾h
- Bernina Express 6 ¾h
- Gotthard Panorama Express 5 ½h
- Voralpen-Express 2 ¼h
- St. Gallen–Schaffhausen–Zürich 2 ½h
- Scenic connection routes /  
Sehenswerte Verbindungsstrecken
- myGrandTrainTour Booklet



# Bookable route suggestions.



**Switzerland.**  
by train, bus and boat.

- **“Original”** tour from 8 days/7 nights
- **“Classic”** tour from 8 days/7 nights
- **“Top Attractions”** tour from 5 days/4 nights
- **“Glaciers & Palm Trees”** tour from 4 days/3 nights
- **“Stunning Waters”** tour from 3 days/2 nights
- **“Hidden Treasures”** tour from 3 days/ 2 nights
- **“Winter Magic”** tour from 8 days/7 nights

Tailor-made tickets are available for all travel suggestions. Partners without a system connection can obtain the packages for the tours at attractive B2B conditions via STC or Railtour.



# “Original” tour.



**Switzerland.**  
by train, bus and boat.

- From 8 days/7 nights
- What to expect/see/experience
  - All scenic routes (e.g Glacier Express, GoldenPass Express, Bernina Express and Gotthard Panorama Express or Treno Gottardo)
  - 11 top sights (e.g. Chapel Bridge, Jungfrau Region, Chillon Castle, Matterhorn, Rhine Gorge, Rhine Falls)
  - Choice of 21 top mountain excursions (e.g. Rigi, Pilatus, Jungfrauoch, Säntis and Gornergrat)
  - 10 destinations: Zurich, Lucerne, Interlaken, Montreux, Zermatt, Chur, St. Moritz, Lugano, St. Gallen, Schaffhausen



# “Classic” tour.



**Switzerland.**  
by train, bus and boat.

- From 7 days/6 nights
- What to expect/see/experience
  - 6 scenic routes (e.g Glacier Express, Gotthard Panorama Express, Luzern–Interlaken Express)
  - 11 top sights (e.g. Lavaux Vineyard Terraces, Landwasser Viaduct, the three castles of Bellinzona)
  - Choice of 19 top mountain excursions (e.g. Jungfraujoch, Diavolezza, Monte San Salvatore)
  - 8 destinations: Zurich, Lucerne, Interlaken, Montreux, Zermatt, Chur, St. Moritz, Lugano





# “Top Attractions” tour.



**Switzerland.**  
by train, bus and boat.

- From 5 days/4 nights
- What to expect/see/experience
  - 4 scenic routes: Luzern–Interlaken Express, GoldenPass Express, Glacier Express, Visp–Zermatt
  - 6 top sights (e.g. Chapel Bridge, Jungfrau Region, Chillon Castle, Matterhorn, Rhine Gorge)
  - Choice of 14 top mountain excursions (e.g. Pilatus, Jungfrauoch und Gornergrat)
  - 6 destinations: Zurich, Lucerne, Interlaken, Montreux, Zermatt, Chur



# “Glaciers & Palm Trees” tour.



**Switzerland.**  
by train, bus and boat.

- From 4 days/3 nights
- What to expect/see/experience
  - 2 scenic routes: Bernina Express, Gotthard Panorama Express or Treno Gottardo
  - 4 top sights: Chapel Bridge, Landwasser Viaduct, the three castles of Bellinzona, Brusio Circular Viaduct
  - Choice of 14 top mountain excursions (e.g. Pilatus, Jungfrauoch und Gornergrat)
  - 5 destinations: Zurich, Lucerne, Chur, St. Moritz, Lugano





# “Stunning Waters” tour.



**Switzerland.**  
by train, bus and boat.

- From 3 days/2 nights
- What to expect/see/experience
  - 2 scenic routes: Voralpen-Express and along the Turbo lake line
  - 3 top sights: Chapel Bridge, Rhine Falls, UNESCO Abbey District St. Gallen
  - Choice of 5 top mountain: Rigi, Pilatus, Stanserhorn, Titlis, Säntis
  - 4 destinations: Zurich, Lucerne, St. Gallen, Schaffhausen



# “Hidden Treasures” tour.



**Switzerland.**  
by train, bus and boat.

- From 3 days/2 nights
- What to expect/see/experience
  - 4 scenic routes: Luzern–Interlaken Express, BLS Lötschberger, Vigezzina-Centovalli, Gotthard Panorama Express or Treno Gottardo
  - 3 top sights: Chapel Bridge, Jungfrau Region, Castles of Bellinzona, the three castles of Bellinzona
  - Choice of 12 top mountain (e.g. Brienzer Rothorn, Harder Kulm, Grindelwald First and Monte Brè)
  - 4 destinations: Zurich, Lucerne, Interlaken, Locarno-Ascona





# “Winter Magic” Tour.



**Switzerland.**  
by train, bus and boat.

- From 8 days/7 nights
- What to expect/see/experience
  - 4 scenic routes: Luzern–Interlaken Express, Glacier Express, Bernina Express, Visp–Zermatt
  - 5 top sights: Jungfrau Region, Matterhorn, Rhine Gorge, Landwasser Viaduct, Chapel Bridge
  - Choice of 17 top mountain (e.g. Jungfrauoch, Matterhorn glacier paradise, Diavolezza)
  - 6 destinations: Zurich, Lucerne, Interlaken, Zermatt, Chur, St. Moritz
  - Possibility for winter sports in 3 destinations (Jungfrau Region, Zermatt, Engadin)



# Overview of marketing communication material.



**Switzerland.**  
by train, bus and boat.

- Factsheet "OnePager"
- *my*GrandTrainTour Booklet
- Grand Train Tour of Switzerland App
- Virtual touring experience



**Grand Train Tour of Switzerland.**

The Grand Train Tour of Switzerland is the ultimate train journey through Switzerland. It combines all the famous panoramic lines into one breathtaking route over eight stages. Available all year round, this route – spanning 1,280 kilometres – leads from some of the most charming Swiss cities to Alpine villages. As well as UNESCO World Heritage sites, the route encompasses some of Switzerland's most well-known sights and landmarks, from the majestic Matterhorn to Lucerne's Chapel Bridge. And as Switzerland is home to some of the most beautiful mountain landscapes, the route can also be combined with a variety of mountain excursions.

**Travel routes & highlights.**

- Zürich–Lucerne–Interlaken (Lucerne–Interlaken Express) 2 1/2h
- GoldenPass Express 3 1/2h
- Montreux–Visp–Zermatt 2 1/2h
- Glacier Express 7 1/2h
- Bernina Express 6 1/2h
- Gotthard Panorama Express 5 1/2h
- Vorarlpen-Express 2 1/2h
- St. Gallen–Schaffhausen–Zürich 2 1/2h
- Scenic connection routes / Sehenswerte Verbindungsstrecken
- myGrandTrainTour Booklet

The travel suggestions on the Grand Train Tour of Switzerland include wonderful journeys by train as well as many tourist highlights. The train journey can be experienced in its entirety over eight stages on the Original Tour. This includes all the scenic train routes and top sights as well as travel across four of Switzerland's language regions. The option is available to add extra days along the route, with a choice of 21 mountain excursions to make a truly bespoke itinerary. These include a visit to the Gornegrat, to take a glimpse at the Matterhorn, or the Titlis, where snow can be experienced all year round.

The tour can equally be enjoyed on shorter route sections, each with a different focus and taking different highlights, but with all of these offering breath-taking scenery. The duration and route are different in each case, and can also be adapted to suit individual tastes. Guests also decide where and how long to stay overnight.

**my Grand Train Tour**



# myGrandTrainTour Booklet.

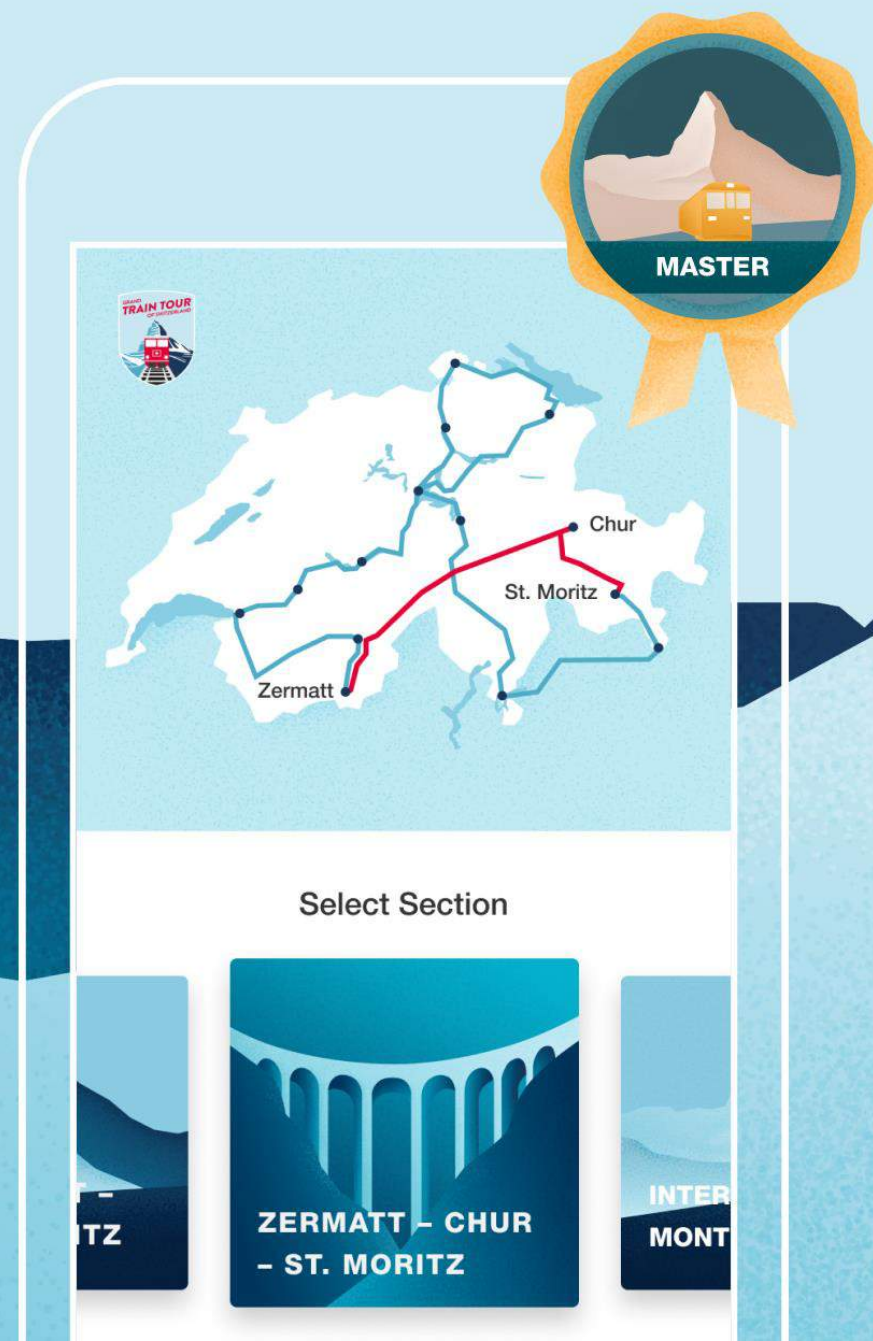


**Switzerland.**  
by train, bus and boat.



- Stamp booklet to collect nine individual stamps
- Attractive discount coupons
- Competition
- Useful travel information
- Available in English only
- Available at the stamp collection facilities. Selected train stations hand it out when travellers buy a Swiss Travel Pass

# Grand Train Tour of Switzerland App.





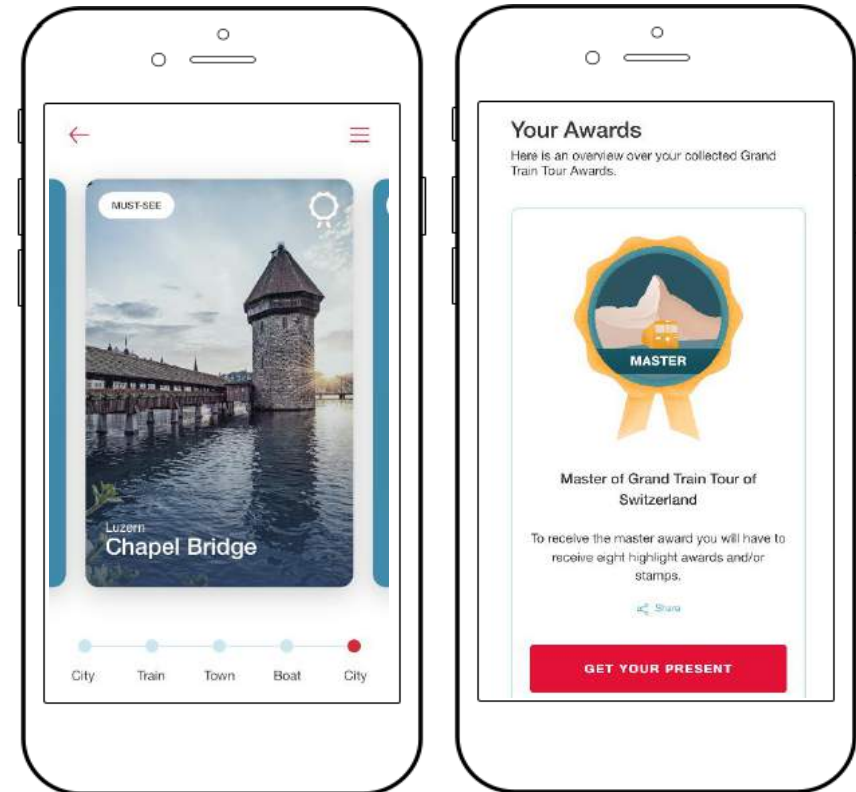
# Grand Train Tour of Switzerland App.



**Switzerland.**  
by train, bus and boat.

## Facts:

- “Must-sees” along the Grand Train Tour of Switzerland
- Timetable information for all sections
- **Push notifications** for upcoming sights
- **Collecting and sharing of stamps**, awards and coupons
- “Been there” function
  
- Available in 6 languages: German, English, French, Korean, Thai and Japanese
  
- Free Download for iOS and Android in the App Store and Google Play Store
  
- For more information, please go to:  
[MySwitzerland.com/traintourapp](http://MySwitzerland.com/traintourapp)



# Virtual Touring Experience.



**Switzerland.**  
by train, bus and boat.

- Immersive VR / 360-degree videos of all sections of the Grand Train Tour of Switzerland
- Can be experienced via smartphone, tablet or VR glasses
- Videos





# Scenic Routes



**Switzerland.**  
by train, bus and boat.

Vorlappen-Express near Steinberg, Central Switzerland



# Lake Lucerne Cruises.

A motor vessel is seen on the water of Lake Lucerne during sunset. The sun is low on the horizon, creating a bright, shimmering reflection on the water's surface. The sky is filled with soft, golden light and scattered clouds. The vessel, a multi-decked motorboat, is positioned in the middle ground, moving across the water. The background shows the dark silhouettes of hills and a distant town under the twilight sky.



# Lake Lucerne Cruises.



**Switzerland.**  
by train, bus and boat.

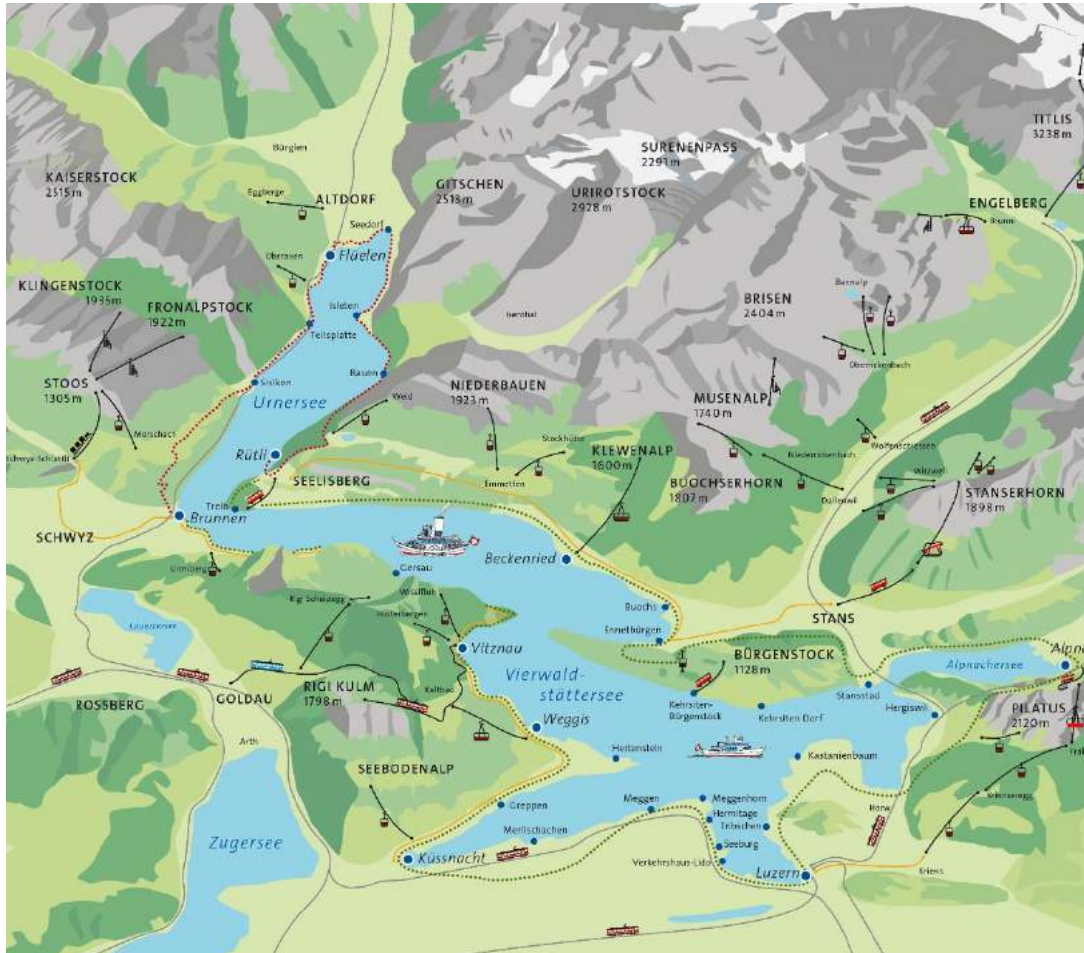


# Lake Lucerne Cruises.

## From Lucerne to Flüelen



**Switzerland.**  
by train, bus and boat.



- **Lake surface:** 114 km<sup>2</sup>
- **Fleet:** 20 vessels, 5 of which are paddle steamers
- **Boat cruises** 365 days a year



# Lake Lucerne Cruises.



**Switzerland.**  
by train, bus and boat.

## Good to know

- Various round courses from/to Lucerne, duration between 1 and 5.5 hours
- Unlimited travel on all cruise boats with the Swiss Travel Pass. Reduction for Swiss Travel Pass holders for the 1-hour-cruise on the panorama yacht Saphir
- Onboard restaurant on most cruise boats
- Reservation required on Lunch Cruise / “Zmittags-Dampfer” (prior to 11.00 h) and Sunset Cruise (prior to 15.00 h)
- For groups (10 or more persons) reservation in the restaurant and prior menu selection are required (no surcharge)



# PostBus Route – Central Alps





# Central Alps Passes PostBus Route.



**Switzerland.**  
by train, bus and boat.

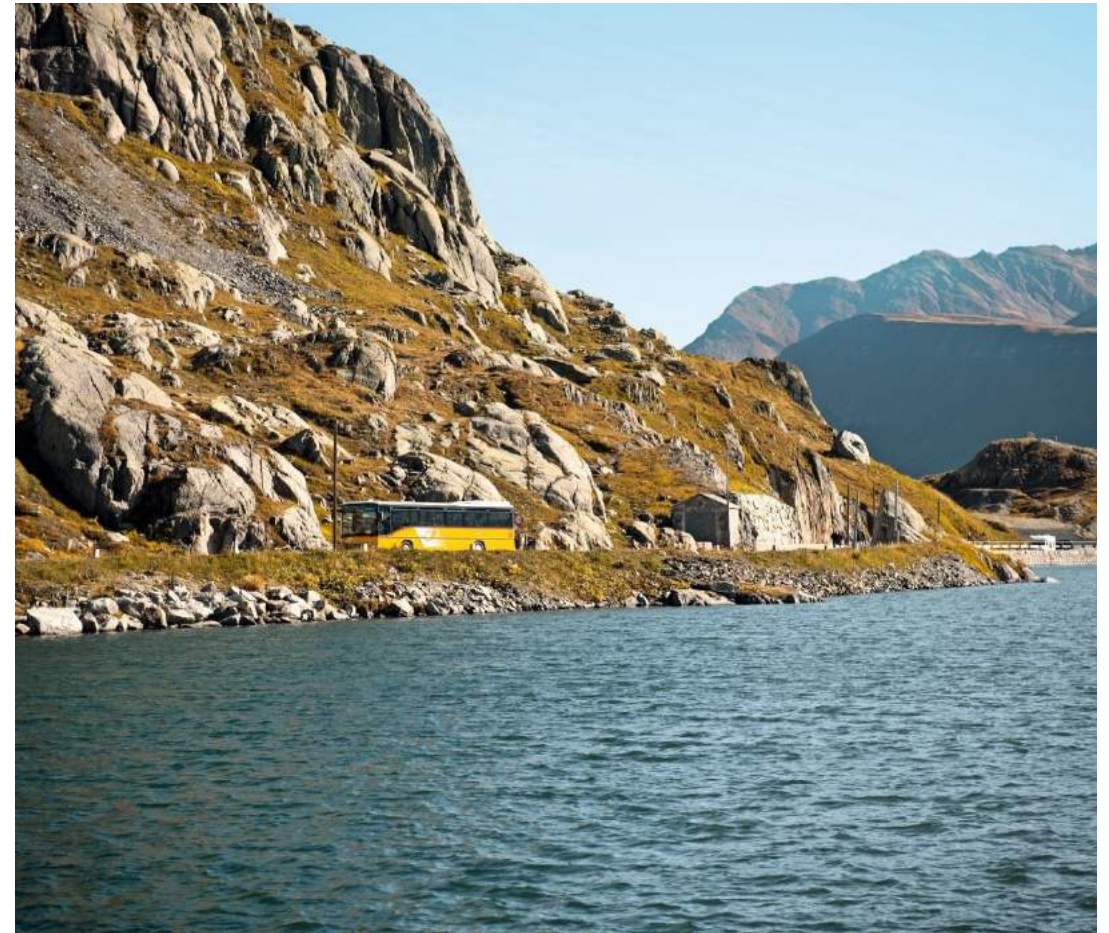


# Central Alps Passes PostBus Route.



**Switzerland.**  
by train, bus and boat.

- **Route:** Meiringen–(Grimsel)–(Nufenen)–(Gotthard)–(Susten)–Meiringen
- **Duration:** 8 h 45 min
- **Distance:** 208 km
- The Central Alps Passes PostBus Route operates from 22 June – 06 Oct 2024
- Transport of bicycles is possible



Postbus, Grimsel Pass, Bernese Oberland



# BLS boat cruises on Lake Thun and Lake Brienz.



**Switzerland.**  
by train, bus and boat.



# BLS boat cruises on Lake Thun and Lake Brienz.



**Switzerland.**  
by train, bus and boat.



Steamboat Blümlisalp with Niesen, Bernese Oberland

- **Lake Thun:** Year-round operation (high season May–October with hourly departures); limited timetable during off-peak season
- **Lake Brienz:** Seasonal operation (April–October)
- Numerous special cruises (fondue chinoise, fajita, Swiss BBQ, etc.)
- Ideal connections between train and boat at Thun, Interlaken West, Interlaken Ost and Brienz – piers right at the stations



# GoldenPass Scenic Route.



**Switzerland.**  
by train, bus and boat.



# GoldenPass Panoramic.



**Switzerland.**  
by train, bus and boat.

- **Route:** Montreux–Zweisimmen
- **Duration:** 2 h
- Several daily connections in both directions, summer and winter
- VIP front view seats available on specific trains
- Seat reservation for individual travellers recommended but not required, fee: CHF 9
- An aperitif can be pre-ordered in 1st and 2nd class together with a seat reservation (CHF 34)



GoldenPass Panoramic above Montreux, Lake Geneva region



# GoldenPass Belle Epoque.



**Switzerland.**  
by train, bus and boat.

- **Route:** Montreux–Château-d'Oex–Gstaad–Zweisimmen
- **Duration:** 2 h 07 min
- Train in the style of the legendary Orient Express
- Offers 1st and 2nd class saloon coaches as well as a rustic coach with wooden benches in 2nd class
- An aperitif can be added to a regular seat reservation



# BLS RegioExpress Lötschberger.



**Switzerland.**  
by train, bus and boat.





# BLS RegioExpress Lötschberger.



**Switzerland.**  
by train, bus and boat.



Regio Express Lötschberger, Luogelkin Viaduct near Hochtenn, Valais

- **Route:** Hourly connections Bern–Zweisimmen and Bern–Kandersteg–Brig, every 2 hours to/from Domodossola
- **Duration:** 1 h 40 min (Bern–Brig)
- Large panorama windows in 1st and 2nd class
- Low-floor access and electric power outlets in 1st and 2nd class
- bistro zone with snack and coffee vending machines

# Vigezzina-Centovalli-Bahn.



**Switzerland.**  
by train, bus and boat.





# Vigezzina-Centovalli-Railway.



**Switzerland.**  
by train, bus and boat.

- Operates year-round almost every hour
- Panoramic Train «Vigezzo Vision» or regular train «Centovalli-Express»
- On the panoramic trains, a seat surcharge of EUR 1.50 applies for the Italian section Domodossola–Camedo (payable on board)
- Valid travel documents required for border crossing into Italy



Vigezzina-Centovalli Railway in autumn, Intragna, Tessin

# Palm Express.



**Switzerland.**  
by train, bus and boat.





# Palm Express.



**Switzerland.**  
by train, bus and boat.



Palm Express at the Maloja Pass linking the Bergell and the Engadine, Graubünden

- **Operation:** From St. Moritz and Lugano: year-round operation; every Friday, Saturday and Sunday; daily operation from 18 Dec 2023 – 02 Jan 2024 and from 10 Jun – 20 Oct 2024
- **Route:** St. Moritz–Chiavenna–Menaggio–Lugano
- **Duration:** 3 h 50 min
- Passport or identity card required for border crossing into Italy
- All Palm Express buses equipped with luggage storage facilities
- No bicycle transportation available on this route; wheelchair access not guaranteed

# Treno Gottardo.



**Switzerland.**  
by train, bus and boat.





# Treno Gottardo.



**Switzerland.**  
by train, bus and boat.



Treno Gottardo near Wassen, Central Switzerland

- **Route & Duration:**
  - Zürich–Locarno: 3 h 20 min
  - Basel–Locarno: 4 h 22 min
  - Luzern–Locarno: 3 h 7 min
- Operates at hourly intervals, alternating from Basel and Zurich
- Equipped with panoramic windows, power outlets and family compartements
- Two modern bistro areas with snack and drink vending machines as well as a coffee machine

# Voralpen-Express.



**Switzerland.**  
by train, bus and boat.





# Voralpen-Express.



**Switzerland.**  
by train, bus and boat.

- **Route:** Luzern–Arth-Goldau–Rapperswil–Wattwil–St. Gallen
- **Duration:** 2 h 15 min
- Operates at hourly intervals in both directions
- Bistro coach and vendor machines for refreshment
- Large panoramic windows in 1st class
- Bicycle transport possible



Voralpen-Express near Arth, Central Switzerland



# Theme routes.



**Switzerland.**  
by train, bus and boat.

Kambly train in summer, Bernese Oberland



# Cheese Train.



# Cheese Train.

## From Montreux to Château-d'Oex



**Switzerland.**  
by train, bus and boat.



- **Route:** Montreux/Zweisimmen–Château-d'Oex–Montreux/Zweisimmen
- **Duration:** 4 h



# Cheese Train.



**Switzerland.**  
by train, bus and boat.

- Journey in 1st and 2nd class coaches
- Operation: 03 Feb – 30 Oct 2024 every Wednesday, Friday, Saturday and Sunday
- Offer includes: train ride  
Montreux/Zweisimmen–Château-d’Oex–  
Zweisimmen/Montreux, visit of the “Chalet Bio” show dairy, cheese fondue in the restaurant “Le Chalet” (beverages excluded), free admission to the Musée du Pays-d’Enhaut and a “souvenir bag”
- A max. of 30 numbered seats are available



Le Chalet Cheese Dairy. Château-d’Oex, Lake Geneva Region



# Chocolate Train.





# Chocolate Train.

## From Montreux to Gruyères



**Switzerland.**  
by train, bus and boat.



- **Route:** Montreux–Montbovon–change from train to bus–Gruyères–Broc Fabrique–Montreux
- **Duration:** 7 h 30 min

# Chocolate Train.



**Switzerland.**  
by train, bus and boat.

- Operation May, June & September: every Tuesday, Thursday and Sunday
- Operation July & August: every Tuesday, Thursday, Friday, Saturday and Sunday
- Offer includes:
  - train ride from Montreux to Montbovon and bus ride to Gruyères, Broc Fabrique, as well as return journey to Montreux
  - coffee and chocolate bread on the train, free admission to show dairy “La Maison du Gruyère” and chocolate factory of Nestlé Cailler in Broc as well as accompaniment by tour guide



Chocolate Train Bus of MOB



# Cookie Train.





# Cookie Train.



**Switzerland.**  
by train, bus and boat.



- **Route:** Bern–Trubschachen–Luzern–Brienz–Interlaken–Bern
- **Duration:** 5 h



# Cookie Train.



**Switzerland.**  
by train, bus and boat.

- Can be combined with a boat cruise from April to October (boat cruise Brienz–Interlaken Ost)
- Offer includes all means of transportation and admission to “the Kambly Experience” (open daily)
- The round trip can be started at every stage along the route in either direction
- Seat reservation only available on the Luzern–Interlaken Express
- Unlimited travel with Swiss Travel Pass, Swiss Travel Pass Flex (on validated travel days), 50% discount with Swiss Half Fare Card



"Globi Express".



# Globi-Express.

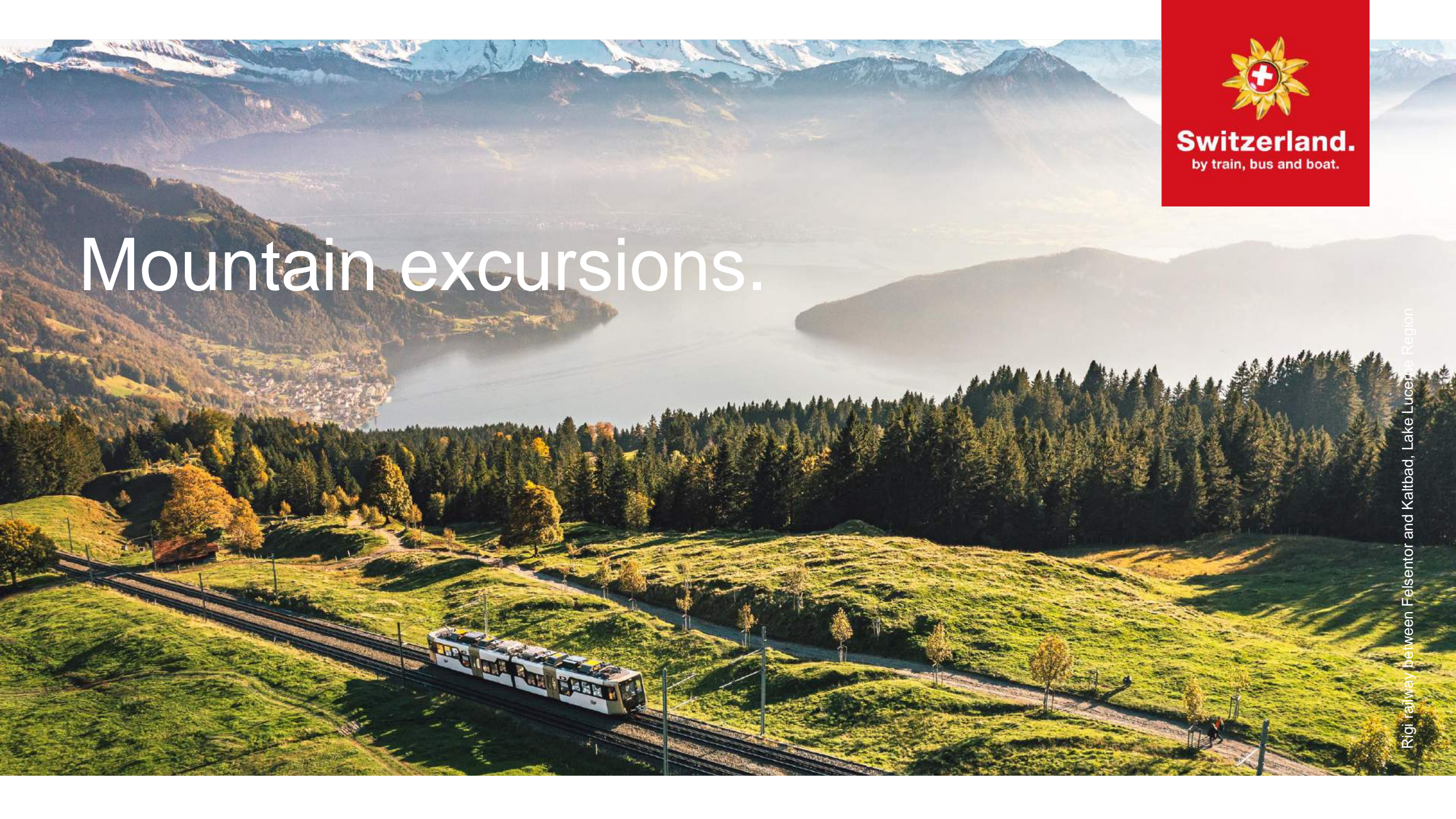
- On each Luzern–Engelberg Express
- Fun competition for kids
- Books and audio books on board



**Switzerland.**  
by train, bus and boat.







**Switzerland.**  
by train, bus and boat.

# Mountain excursions.

Rigi railway between Felsentor and Kaltbad, Lake Lucerne Region



# Glacier 3000 – the summit of the GoldenPass Scenic Route.



In only 15 minutes tot the summit og Glacier 3000, Vaud

# Glacier 3000 – summit of the GoldenPass Scenic Route.



**Switzerland.**  
by train, bus and boat.



- **Altitude:** 2,965 m a.s.l.
- **Route:** Gstaad or Les Diablerets – Col du Pillon – Glacier 3000



# Glacier 3000 – summit of the GoldenPass Scenic Route.

## Top attractions

- Peak Walk by Tissot – first suspension footbridge spanning the deep between two peaks (107 meters long)
- Alpine Coaster – Europe’s highest toboggan run (summer only)
- Dog sledge rides and snow bus (upon request)





**Switzerland.**  
by train, bus and boat.

# Glacier 3000 – summit of the GoldenPass Scenic Route.

## Good to know

- Year-round operation (except during maintenance period)
- PostBus from Gstaad or Les Diablerets to Col du Pillon, continuing on aerial cableway to the summit station Glacier 3000, daily from 09.00 h to 16.30 h at 20-minute intervals
- Travel time to summit: 15 min
- New panoramic restaurant Botta (opening spring 2024) and two other summit restaurants with unique panoramic view of Alpine peaks
- “Watch & Souvenir Shop” at 3,000 metres (9,842 feet) a.s.l.
- 50% discount with Swiss Travel Pass (Flex) and Swiss Half Fare Card



Gornergrat – Best view Matterhorn.



# Gornergrat – Best view Matterhorn.



**Switzerland.**  
by train, bus and boat.



- **Altitude:** 3,089 m a.s.l.
- **Route:** Zermatt–Gornergrat



# Gornergrat – Best view Matterhorn.



**Switzerland.**  
by train, bus and boat.



Station Gornergrat, Zermatt, Valais

## Top attractions

- Best view of the Matterhorn
- World-famous Matterhorn reflection on Lake Riffelsee
- Unique mountain panorama of 29 4,000-metre peaks (13,000 feet peaks)
- Viewing terraces, theme trails and photopoints such as "Golden Spot" with Lok3003
- Interactive exhibition: ZOOOM the Matterhorn - See. Feel. Marvel.
- New NostalChic Class

# Gornergrat – Best view Matterhorn.



**Switzerland.**  
by train, bus and boat.

## NostalChic Class

- The most exclusive way to travel to the Gornergrat
- Elevated travel experience in a nostalgic coach
- Runs once a week
- Exclusive ambience for up to 22 guests
- Including local guide
- Culinary delicacies made from local ingredients





# Gornergrat – Best view Matterhorn.



**Switzerland.**  
by train, bus and boat.



## Golden Spot

- The historic locomotive 3003 from the first generation of the Gornergrat Railway is displayed in gold on the summit
- The new viewing platform including the "GoldenSpot" photo point is the ideal place for a souvenir photo with the Matterhorn in the background

# Gornergrat – Best view Matterhorn.



**Switzerland.**  
by train, bus and boat.

## Good to know

- Year-round operation
- In the high season (June–October & December–April), trains leave every 24 min
- Travel time to summit: 33 minutes
- Lower terminus of Gornergrat railway located opposite Zermatt Railway station
- Shopping mall and restaurant on Gornergrat
- World-famous Matterhorn reflection on Lake Riffelsee
- 50% discount with Swiss Travel Pass (Flex) and Swiss Half Fare Card



# Jungfraujoch – Top of Europe.





# Jungfrauoch – Top of Europe.



**Switzerland.**  
by train, bus and boat.



- **Altitude:** 3,454 m a.s.l.
- **Route:** Interlaken Ost–Grindelwald/Lauterbrunnen–Jungfrauoch or Interlaken Ost–Grindelwald Terminal–Eigergletscher (Eiger Express)



# Jungfraujoch – Top of Europe.



**Switzerland.**  
by train, bus and boat.

## Top attractions

- Aletsch Glacier – the longest and largest glacier of the Alps
- Intermediate stops Eismeer and Jungfrau-Panorama
- Sphinx viewing terrace at 3,571 metres (11,716 feet) altitude
- Adventure tour “Alpine Sensation” to the Ice Palace
- Adventurous chilling at the “Snow Fun Park” (May to October)



Eiger Express, Jungfraujoch, Bernese Oberland

# Jungfrauoch – Top of Europe.



**Switzerland.**  
by train, bus and boat.

## Good to know

- Eiger Express, 47 minutes faster to the Jungfrauoch
- Operates 365 days a year, regular interval timetable (every 30 minutes)
- Travel time to summit: 1 h 30 min from Interlaken Ost
- Refreshments available in several restaurants on the Jungfrauoch (e.g. Bollywood Indian Restaurant, self-service restaurant Aletsch)
- Chocolate adventure shop “Lindt Swiss Chocolate Heaven”
- “Top of Europe” souvenir shops
- 25% discount with Swiss Travel Pass (Flex)



# Jungfrauoch – Top of Europe.



**Switzerland.**  
by train, bus and boat.

## Eiger Walk of Fame

- Opening in spring 2024
- Themed trail centered on the conquering of the Eiger North Face
  - Information boards about the history of mountain climbing
  - Photospot with the Eiger North Face in the background
  - Circular trail: 2 h 30 min
  - Descent to Kleine Scheidegg: 1 h 30 min





# Rigi – Queen of the mountains.





# Rigi – Queen of the mountains.

## From Lucerne to Rigi



**Switzerland.**  
by train, bus and boat.



- **Altitude:** 1,798 m a.s.l. / 5,899 ft
- **Majestic Round Trip:** Luzern–Vitznau–Rigi Kulm–Arth-Goldau–Luzern

# Rigi – Queen of the mountains.



**Switzerland.**  
by train, bus and boat.

## Excursion tips

- Majestic Round Trip with boat, cog railway and train
- 2021: 150th anniversary of the Rigi Railways
- Regional catering
- Mineral bath and Spa at Rigi Kaltbad
- Guided culinary hiking tours with local guides and regional dishes
- Winter wonderland for sledging, ski and winter hiking



Lok 17 in winter, Lake Lucerne Region



# Rigi – Queen of the mountains.



**Switzerland.**  
by train, bus and boat.

## Good to know

- Open 365 days a year (regular interval timetable)
- Arrival: By boat or bus to Vitznau, onwards by cog railway to Rigi Kulm. Via Goldau or Weggis from Vitznau 33 minutes; from Goldau 37 minutes to Rigi Kulm; from Weggis 10 minutes to Rigi Kaltbad with onward connection to cog railway for Rigi Kulm
- Choice of accommodation and restaurants
- Unlimited travel with Swiss Travel Pass and Swiss Travel Pass Flex (on validated travel days), 50% discount with Swiss Half Fare Card



# Schilthorn – Piz Gloria.





# Schilthorn – Piz Gloria.



**Switzerland.**  
by train, bus and boat.



- **Altitude:** 2,970 m a.s.l. / 9,744 ft
- **Route:** Lauterbrunnen–Stechelberg–Mürren–Schilthorn–Grütschenalp–Mürren–Lauterbrunnen

# Schilthorn – Piz Gloria.



**Switzerland.**  
by train, bus and boat.

## Excursion tips

- 360° restaurant Piz Gloria, completes one full rotation within 45 minutes
- Skyline View platform
- Interactive adventure exhibition “Spy World”
- “Walk of Fame”
- Cliff pathway “Thrill Walk” at Birg station



Thrill Walk at the middle station Birg, Schilthorn



# Schilthorn – Piz Gloria.



## Good to know

- Open daily, except during revision from 22 – 26 April 2024 and from 14 Oct – March 2025
- Arrival: From Interlaken Ost by train to Lauterbrunnen, then by PostBus to the valley station Stechelberg
- The cableway leaves at 30-minute intervals from Stechelberg resp. Mürren
- Travel time by cableway to the summit: 32 minutes from Stechelberg
- Free travel to Mürren with the Swiss Travel Pass (Flex), 50% discount from Mürren to Schilthorn, 50% discount with the Swiss Half Fare Card

# Brienz Rothorn Railway.



**Switzerland.**  
by train, bus and boat.





# Brienz Rothorn Railway.



**Switzerland.**  
by train, bus and boat.

- Steam railways to Rothorn Kulm daily from 08 Jun – 20 Oct 2024
- Travel time to summit: approx. 60 min
- Panoramic view over 693 mountain peaks
- Rides in the driver's cabin of a steam locomotive
- Free ride on one's birthday
- Arrival at Brienz by boat or train, then approx. 3 walking minutes to lower terminus
- 50% discount with Swiss Travel Pass (Flex) and Swiss Half Fare Card



Brienz Rothorn Railway, Brienz, Bernese Oberland



# CabriO Stanserhorn.



# CabriO Stanserhorn.



**Switzerland.**  
by train, bus and boat.



- **Altitude:** 1,898 m / 6,227 ft
- **Route:** Stans–Stanserhorn–Stans

# CabriO Stanserhorn.



**Switzerland.**  
by train, bus and boat.

- Double-deck cableway CabriO with open-air upper deck
- Railway experience: Luzern–Engelberg Express
- Summit tour with ranger
- Power place with 22,000 measured Bovis energy units
- Panoramic view onto 100 kilometres of the Alpine chain and 10 Swiss lakes
- Rotating restaurant with local ingredients



Cog railway towards Stanserhorn, Central Switzerland



# CabriO Stanserhorn.



## Good to know

- Operates from 13 Apr – 24 Nov 2024
- Arrival: from Lucerne to Stans by train, change of transportation first to funicular and then to the CabriO cableway
- Scheduled service of the railways in 30-minute-intervals.
- Travel time to the summit: app. 24 minutes
- To avoid waiting time, boarding passes available online via [cabrio.ch](https://cabrio.ch)
- Full coverage with Swiss Travel Pass und Swiss Travel Pass Flex (on validated travel days), 50% discount with Swiss Half Fare Card



# Stoos Mountain Railway.





# Stoos Mountain Railway.



**Switzerland.**  
by train, bus and boat.



# Stoos Mountain Railway.



**Switzerland.**  
by train, bus and boat.



- Altitude when arriving at the Stoos Railway summit station: 1,300 m a.s.l
- World's steepest funicular (110%)
- The cabins adapt to the extreme gradient. The standing platform remains perfectly level at all times.
- Travel time: 4 – 7 minutes
- Skiing and hiking area Stoos-Muotatal

World's steepest funicular, Schwyz



# Stoos Mountain Railway.



**Switzerland.**  
by train, bus and boat.

## Good to know

- The Stoos Mountain Railway operates daily and throughout the year every 30 minutes (revision spring and autumn 2024)
- From Schwyz by funicular, alternatively by cableway from Morschach
- Husky encounters, climbing and many more leisure activities
- Several restaurants at the Stoos
- Full coverage with Swiss Travel Pass und Swiss Travel Pass Flex (on validated travel days), 50% discount with Swiss Half Fare Card

# Grindelwald-First – Top of Adventure.



**Switzerland.**  
by train, bus and boat.





# Grindelwald-First – Top of Adventure.



**Switzerland.**  
by train, bus and boat.



Grindelwald First Cliff Walk in Autumn

- Operates daily from 16 Dec 2023 – 03 Nov 2024
- Travel time to the summit station: 25 minutes
- Free-of-charge First Cliff Walk by Tissot
- First Flyer and First Glider
- Train from Interlaken Ost to Grindelwald, then on foot or by PostBus to the valley station of the First gondola lift
- 50% discount with Swiss Travel Pass (Flex) and Swiss Half Fare Card, 25% discount with Eurail / Interrail

# Harder Kulm – Top of Interlaken.



**Switzerland.**  
by train, bus and boat.





# Harder Kulm.



**Switzerland.**  
by train, bus and boat.

- Operates daily from 29 Mar – 24 Nov 2024
- Daily evening rides until 20 Oct 2024
- Runs every 30 minutes
- Panorama funicular Interlaken–Harder Kulm
- Viewing platform Two Lakes Bridge
- Panorama restaurant with spacious terrace
- Perfect panoramic view of Eiger, Mönch, Jungfrau and Lakes Thun and Brienz
- 50% discount with Swiss Travel Pass (Flex) and Swiss Half Fare Card, 25% discount with Eurail / Interrail



Areal View on Harder Kulm, Bernese Oberland

# Matterhorn Glacier Paradise.



**Switzerland.**  
by train, bus and boat.





# Matterhorn Glacier Paradise.



**Switzerland.**  
by train, bus and boat.



Matterhorn Glacier Paradise, Zermatt, Wallis

- The Crystal Ride cabins: while floating high above the glacier, the glass floor clears up
- Highest-altitude viewing platform in Europe
- Cinema Lounge with new thrilling film scenes focusing on Zermatt
- The world's highest glacier palace with ice sculptures and ice slide
- Year-round operation
- 50% discount with Swiss Travel Pass (Flex) and Swiss Half Fare Card

# Monte Generoso, Capolago.



**Switzerland.**  
by train, bus and boat.





# Monte Generoso, Capolago.



**Switzerland.**  
by train, bus and boat.

- Operates daily from 01 Apr – 27 Oct 2024, hourly departures
- Travel time from Capolago to the summit: 40 minutes
- Summit building “Fiore di pietra” (stone flower) by Mario Botta with restaurants, panoramic terrace and conference room
- Arrival: by boat from Lugano or by public transport via Capolago-Riva s. Vitale, change to cog railway
- 50% discount with Swiss Travel Pass (Flex) and Swiss Half Fare Card



Mountain station of the Monte Generoso with the stone flower from Mario Botta, Ticino

# Pilatus.



**Switzerland.**  
by train, bus and boat.





# Pilatus – Golden round trip.



**Switzerland.**  
by train, bus and boat.



Pilatus cog railway, Central Switzerland

- Year-round operation from Kriens, except during revision from 21 Oct – 08 Nov 2024
- Cog railway operates from early/mid May until 17 Nov 2024 (Reservations are strongly recommended for the cog railway)
- Travel time to summit: approx. 40 minutes
- Golden Round Trip Luzern–Kriens–Fräkmüntegg–Pilatus Kulm–Ipnachstad –Luzern (bus, cableway and boat)
- World's steepest cog railway (48% gradient) from Alpnachstad to Pilatus Kulm
- Cliff walk and secured trails to the viewpoint Oberhaupt
- 50% discount with Swiss Travel Pass (Flex), Swiss Half Fare Card and with Eurail / Interrail

# Rochers-de-Naye.



**Switzerland.**  
by train, bus and boat.





# Rochers-de-Naye.



**Switzerland.**  
by train, bus and boat.

- Year-round operation, only Saturdays and Sundays in November
- From 08 Jan – 26 Mar 2024, the stretch from Haut-de-Caux to Rochers-de-Naye is not operated on Mondays and Tuesdays
- Free admission to “La Rambertia”, a botanical Alpine garden with more than 800 species of mountain plants from all over the world (only open during summer)
- Via ferrata from Jaman to Rochers-de-Naye
- Father Christmas on the summit
- Full coverage with Swiss Travel Pass (Flex) from Montreux to Haut-de-Caux, 50% discount from Haut-de-Caux to Rochers-de-Naye, 50% discount with Swiss Half Fare Card



Cogwheel railway, Rochers-de-Naye, Lake Geneva Region

# Säntis.



**Switzerland.**  
by train, bus and boat.





# Säntis.



**Switzerland.**  
by train, bus and boat.

- Year-round operation except during revision from 15 Jan – 02 Feb 2024
- Panoramic view of six countries
- Hiking and biking trails
- Restaurants and fireplaces
- Wellness centre
- 50% discount with Swiss Travel Pass (Flex) and Swiss Half Fare Card, 50% discount with Eurail / Interrail



Säntis Schwebbahn, Appenzellerland

# Schynige Platte.



**Switzerland.**  
by train, bus and boat.





# Schynige Platte.



**Switzerland.**  
by train, bus and boat.

- Operates daily from 29 Jun – 20 Oct 2024
- Free admission to the Botanic Alpine Garden with roughly 650 species of flowers
- “Swiss Flower Panorama Trail” with photo spot
- Alpine playground
- From Interlaken Ost by train to Wilderswil, then change to cog railway.
- 50% discount with Swiss Travel Pass (Flex) and Swiss Half Fare Card, 25% discount with Eurail / Interrail



Schynige Platte Railway with electro locomotive, Bernese Oberland

# Sunnegga, Zermatt



**Switzerland.**  
by train, bus and boat.





# Sunnegga, Zermatt.



**Switzerland.**  
by train, bus and boat.



Lake Leisee Sunnegga, Zermatt, Valais

- Year-round operation, except during revision from 22 Apr – 17 May 2024 and from 14 Oct – 29 Nov 2024
- Travel time from Zermatt: 4.5 minutes
- Unique view of the Matterhorn
- “Wolli adventure park” at Lake Leisee with playground and comfortable barbecue areas
- Kickbike ride from Sunnegga to Zermatt
- 50% discount with Swiss Travel Pass (Flex) and Swiss Half Fare Card

# Testa Grigia.



**Switzerland.**  
by train, bus and boat.





# Testa Grigia.



**Switzerland.**  
by train, bus and boat.



- Year-round operation, except during revision from 18 Nov – 20 Dec 2024
- Travel time from Trockener Steg: 13 minutes
- Highest Alpine crossing by cableway which connects two countries; viewing platform at almost 4,000 m a.s.l
- Crystal Ride cabins with glass floor
- SnowXperience Plateau Rosa
- 50% discount with Swiss Travel Pass (Flex) and Swiss Half Fare Card

Matterhorn Glacier Ride II with Matterhorn, Zermatt, Valais

# Titlis.



**Switzerland.**  
by train, bus and boat.





# Titlis.



**Switzerland.**  
by train, bus and boat.

- Year-round operation from 08.30 to 17.00 h, except during revision from 04 – 15 Nov 2024
- “Titlis Cliff Walk” – Europe’s highest suspension footbridge
- Chairlift “Ice Flyer” – glides over up to 10-metre-deep ice crevices
- Titlis “Rotair” – the world’s first areal cableway revolving 360° around its own axis
- Rail experience: Luzern–Engelberg Express
- 50% discount with Swiss Travel Pass (Flex) and Swiss Half Fare Card, 25% discount with Eurail / Interrail



TITLIS Rotair, Central Switzerland



**Switzerland.**  
by train, bus and boat.

On-board gastronomy.

Gastronomy on the train





Rhaetian Railway charter car Gourmino.





Dining in the Glacier Express.





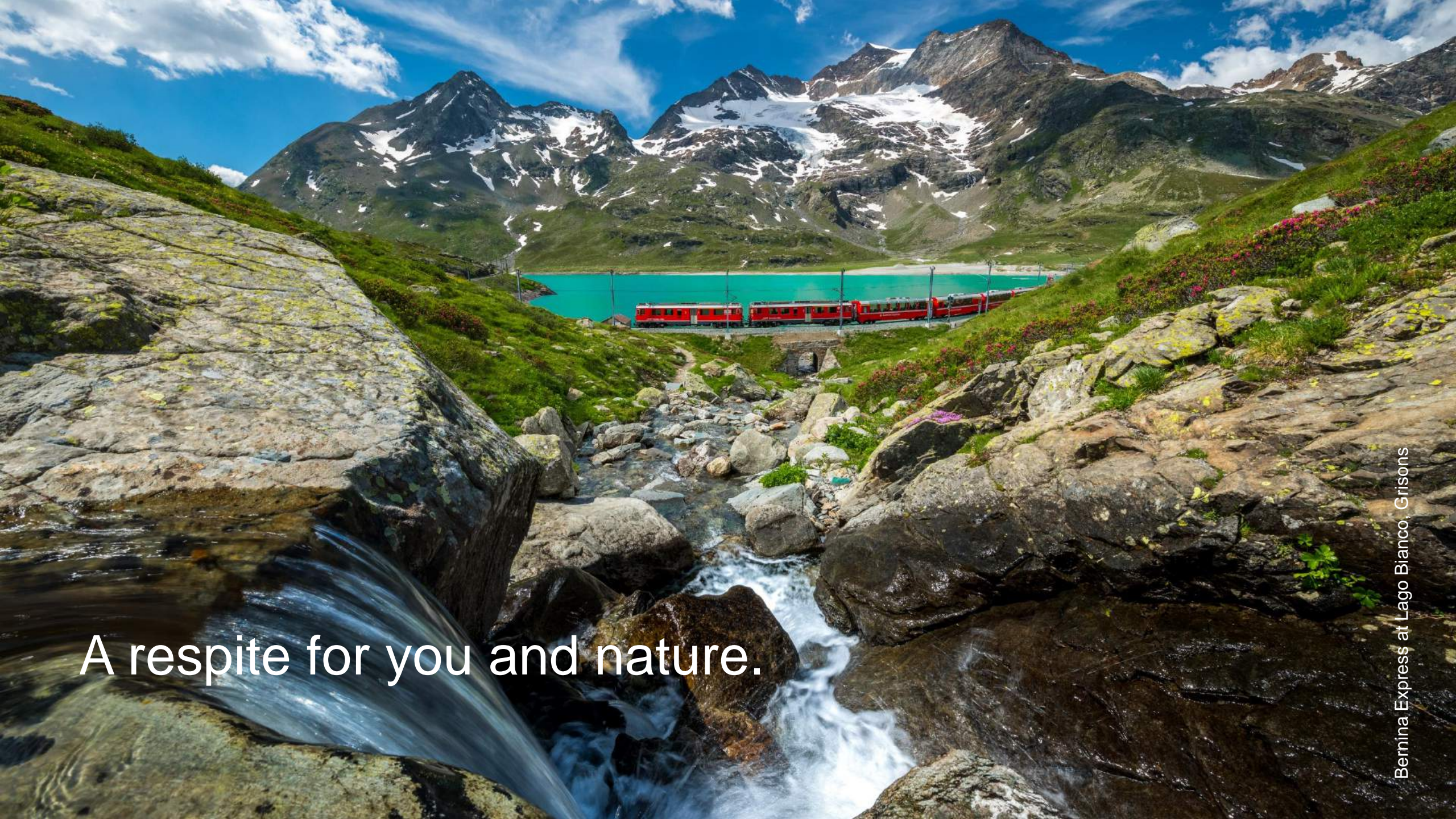
Dining on the Swiss lakes.





Dining in the “Restaurant in the Sky”.





A respite for you and nature.





# Sustainability in public transport – 5 facts.

1

Only pedestrians and bicycles are more ecological than the railway.

2

50 percent less CO<sub>2</sub> until 2025 (SBB)

3

An electric car produces 13 times more CO<sub>2</sub>

4

Train platform of the future: 80% from recycled material (planned)

5

SBB operates with 90% and Rhaetian Railway with 100% hydropower



# Did you know..?



**Switzerland.**  
by train, bus and boat.

- .. that a train ride produces 27 times less CO<sub>2</sub> than a comparable car drive?
- .. that SBB owns seven hydroelectric plants?
- .. that SBB is planning to cover 100% of its electricity requirement from renewable energy sources by 2025?
- .. that railway traffic only contributes 0.2 percent to the total of CO<sub>2</sub> emissions of overall traffic?
- .. that the railway is and remains the environmentally friendliest motorised means of transportation?

# “MobiCat” Lake Biel.



**Switzerland.**  
by train, bus and boat.



- World's largest solar catamaran
- Since 2001, over 40,000 people have been transported using solar power alone
- First self-driving solar power plant in the world
- Also supplies the local electricity grid with energy

Solar catamaran “MobiCat” on Lake Biel



# MS Diamant – climate-neutral on the Lake.



**Switzerland.**  
by train, bus and boat.

- Switzerland's first climate-neutral course boat
- Thanks to the hybrid drive, lower fuel consumption and less CO2 emissions
- SGV AG has entered into a non-profit partnership with the myclimate foundation



MS Diamant on Lake Lucerne, Central Switzerland

# Rhaetian Railway – Hydroelectric power on rails.



**Switzerland.**  
by train, bus and boat.



- Since 2013 the RhB has obtained 100% of the electrical energy for traction vehicles and real estate from hydropower
- Ongoing optimizations: renewable heating energy, modern recycling concepts etc.

Rhaetian Railway at Lago Bianco, Grisons



# Brunni – climate-neutral mountain railway company.



**Switzerland.**  
by train, bus and boat.

- 130,000 kWh is produced thanks to their own solar power plants → more energy than is necessary for the snowmaking on the slopes
- Warm water and heating are obtained from ground water
- Chair lift turns off automatically when no one is using it



# Funi – a marvel of the art of engineering.



**Switzerland.**  
by train, bus and boat.

- Switzerland's last existing hydro-powered funicular
- Without electricity or exhaust fumes
- Is not powered by a motor but by residual water from the upper town
- Uses filtered waste water from a 3,000-litre tank and thus overcomes 56.4 metres in altitude



Funiculare in Fribourg



# SBB – Switzerland biggest provider of sustainable mobility.



SBB train with vineyards in the background, Lake Geneva Region

- Runs with 90% hydropower
- Energy procurement for stations, offices as well as company and production buildings is already 100 percent CO2-neutral
- By 2025, all electricity is planned to come from renewable sources
- SBB contributes substantially to sustainable mobility in Switzerland
- For instance with “adaptive control”, also dubbed “green wave”. The system provides recommendations to the train drivers so that they can avoid unplanned stops at halt signals and drive in a more environmentally friendly way

# Gornergrat Railway: passengers produce energy on the way down.



**Switzerland.**  
by train, bus and boat.

- Recuperation brakes: the motional energy of the train is converted into electrical energy
- During the ride back down into the valley, this energy is fed back into the overhead line
- With the energy recovery of three descents, up to two ascents can be supplied with energy



Gornergrat Railway with the Matterhorn, Valais



# I need sustainable travel.



**Switzerland.**  
by train, bus and boat.



Travelling through Switzerland by train is comfortable, relaxing, environmentally friendly and an experience in itself.

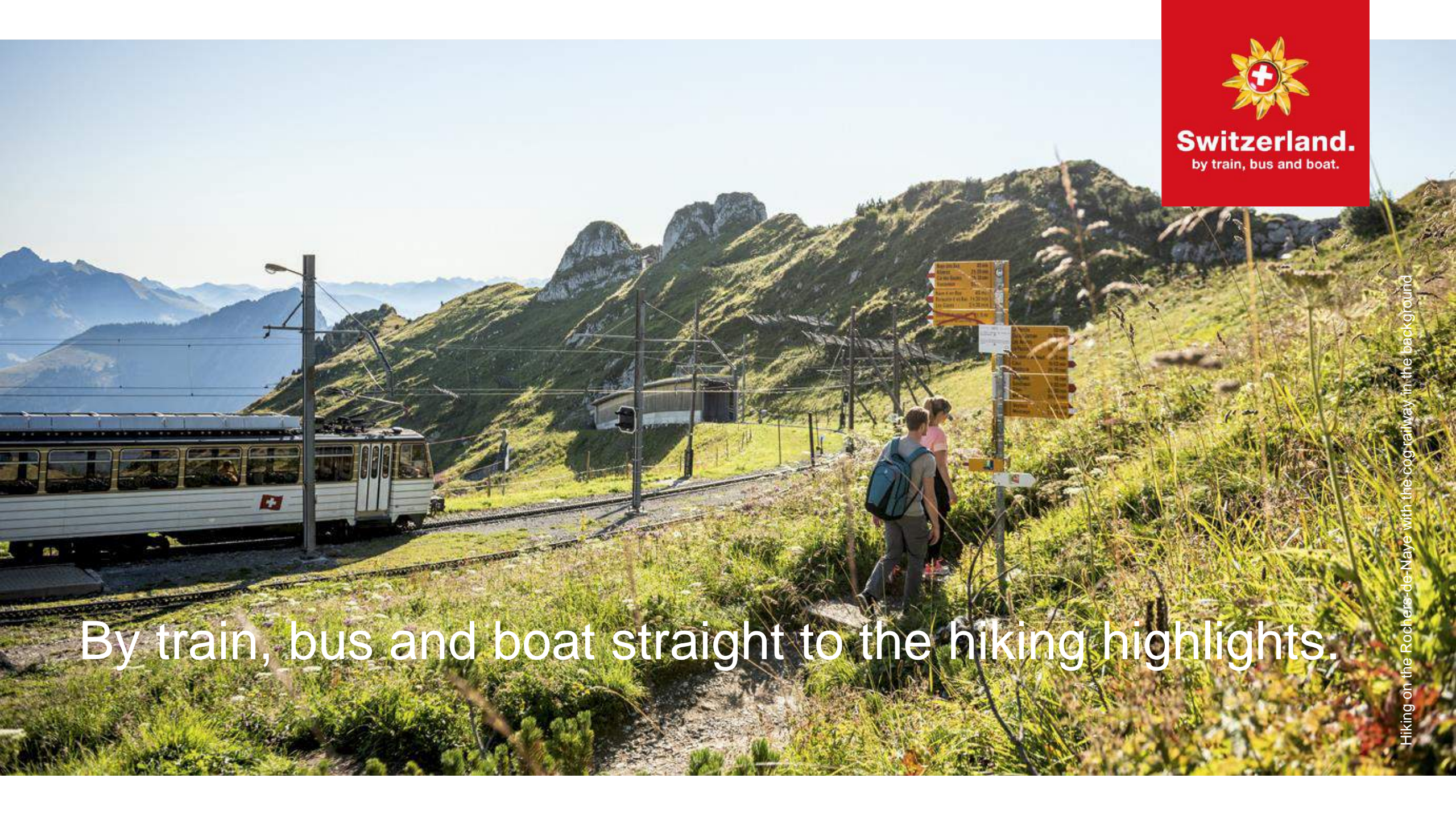
Man hat Zeit, in die sich ständig ändernde Naturkulisse einzutauchen. Und schon dabei erst noch, was man genießt.

Bernina Express in front of the Morteratsch Glacier, Grisons





**Switzerland.**  
by train, bus and boat.



By train, bus and boat straight to the hiking highlights.

Hiking on the Rochers-de-Naye with the cog railway in the background



# By train, bus and boat straight to the hiking highlights.



**Switzerland.**  
by train, bus and boat.



- Thanks to train, bus, boat and mountain railway, the starting point to any hiking trip is easy to reach
- Any hike can be paused and sections done by mountain railway & co.
- Whether easy circular walks or more ambitious hiking tours – start and end points are always well connected to public transport

Hiking in the Lake Geneva Region

# Hiking suggestion 1.

**Lake Geneva region: Hiking with a view of France.**

*The terraces of the Lavaux at Lake Geneva*



**Switzerland.**  
by train, bus and boat.



Hiking through the Lavaux, Lake Geneva Region

- **Starting point:** Lutry
- **Destination:** St-Saphorin
- **Length:** 10.7 kilometres / 2 h 55 min
- Hiking tour through the UNESCO World Heritage Site, the Lavaux region
- Hiking tour can be combined with a bus, train or boat ride at any time



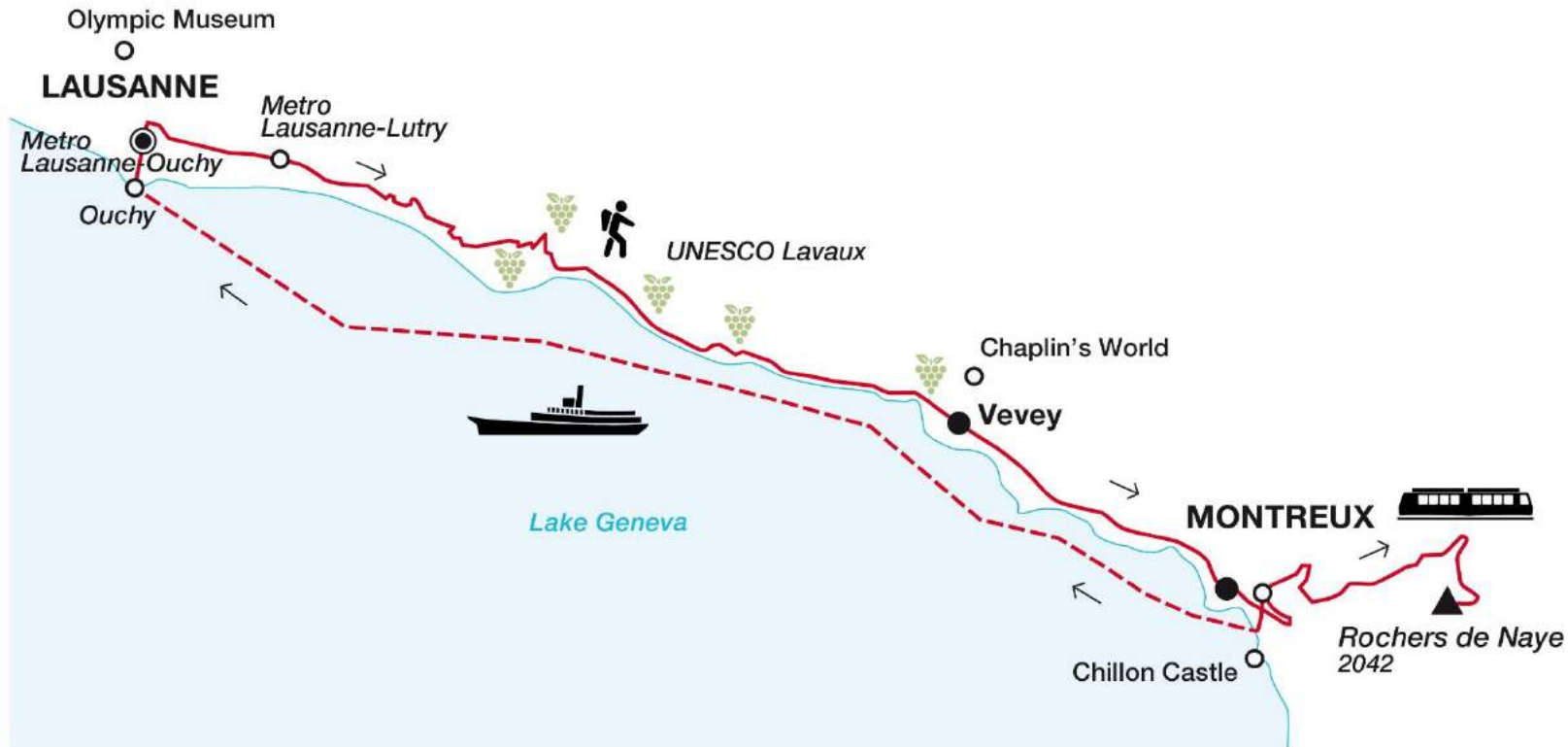
# Hiking suggestion 1.

Lake Geneva region: Hiking with a view of France.

*The terraces of the Lavaux at Lake Geneva*



**Switzerland.**  
by train, bus and boat.





**Switzerland.**  
by train, bus and boat.

# Hiking suggestion 2.

**Zermatt: Impressive hike along the Gornergrat railway route**

*At the foot of the Matterhorn – Station Riffelalp to Sunnegga*

- **Starting point:** Stn. Riffelalp
- **Destination:** Sunnegga
- **Length:** 6.8 kilometres / 2 h 5 min
- Famous Matterhorn reflection on the lakes
- Ride with Gornergrat Railway and funicular



Hikers and Gornergrat Railway near Zermatt, Valais



# Hiking suggestion 3.

**Grisons: On the trail of Bernina and Glacier Express**

*Albula Railway Adventure Trail from Bergün to Preda*



**Switzerland.**  
by train, bus and boat.



The Via Albula/Bernina route along the UNESCO World Heritage, valley of Albulatal, Graubünden

- **Starting point:** Bergün
- **Destination:** Preda
- **Length:** 6.9 kilometre / 2 h 30 min
- Hiking along the UNESCO World Heritage Site
- Hikers can see this masterpiece of engineering up close
- Hiking path crosses the railway tracks of the Bernina and Glacier Express trains numerous times





# Train and Bike.



**Switzerland.**  
by train, bus and boat.



With the Bike on the Swiss Travel System



# Train and Bike.



**Switzerland.**  
by train, bus and boat.

- Planning the train-and-bike adventure.
  - In order to help with the planning of outdoor activities, all routes are linked to the timetable at [schweizmobil.ch](http://schweizmobil.ch).
- Combining rent-a-bicycle and railway adventure.
  - Renting at one place and returning at another – namely at one out of some 200 “rent-a-bike” stations (80 of which are located at railway stations)
- Individual bicycle transport within Switzerland.
- Shipping bicycles in Switzerland as luggage.
- [Video](#)

# Accessible travel.



**Switzerland.**  
by train, bus and boat.

Passengers with reduced mobility, Lucerne station



# Accessible travel.



**Switzerland.**  
by train, bus and boat.

- **Before the journey**
  - SBB Mobile App and online timetable on [sbb.ch](http://sbb.ch) indicate to travellers whether a connection is barrier-free
  - **SBB Contact Center Handicap:** free assistance for boarding and disembarking at support stations
  - Reservation is required at least 1 hour before assistance is needed
  - For international travel, at least 48 hours in advance



# Accessible travel.



**Switzerland.**  
by train, bus and boat.



- During the journey
  - **SBB Inclusive App:** delivers visual, acoustic, and digital customer information from stations and trains directly to your smartphone
  - Most trains are equipped with special areas for wheelchair users
  - Most train stations have
    - Lifts and ramps
    - Tactile guidance systems
    - Acoustic signals





**Switzerland.**  
by train, bus and boat.

# Events and mobility.

[mystsnet.com/mice](https://mystsnet.com/mice)  
[sbb.ch/en/charter](https://sbb.ch/en/charter)

The red "double arrow" Churchill on the Rhine bridge near Laufen, Schaffhausen





Churchill.

The red "double arrow" Churchill at the train station



# Churchill.



**Switzerland.**  
by train, bus and boat.



Seating capacity	Route/region
110 upholstered seats at tables for four (recommended: 80-90 persons)	Variable; upon request


Equipment	Food/catering
<ul style="list-style-type: none"><li>▪ AUX input</li><li>▪ Public address system</li><li>▪ CD player</li><li>▪ Wireless hand microphone</li><li>▪ Air conditioning</li></ul>	Onboard kitchen and bar



Salon suisse.







Rides in the driver's cabin.



# Boat charter on Lakes Brienz and Thun.





# MS Schilthorn.



**Switzerland.**  
by train, bus and boat.

Seating capacity	Route/region
140 banquet seats / 149 restaurant seats, capacity for 300 persons	Lake Thun



Equipment		Food/catering
<ul style="list-style-type: none"> <li>▪ Transmission system</li> <li>▪ DVD player</li> <li>▪ CD player</li> <li>▪ MP3 connection</li> <li>▪ Video player</li> </ul>	<ul style="list-style-type: none"> <li>▪ Beamer</li> <li>▪ Projector screens</li> <li>▪ Microphone sockets</li> <li>▪ Radio microphone</li> <li>▪ <b><u>Virtual tour</u></b></li> </ul>	Yes



# Blauer Pfeil – Blue Arrow.



Historical train Blue Arrow in Bauma, Zurich



# Boat charter on Lake Lucerne.

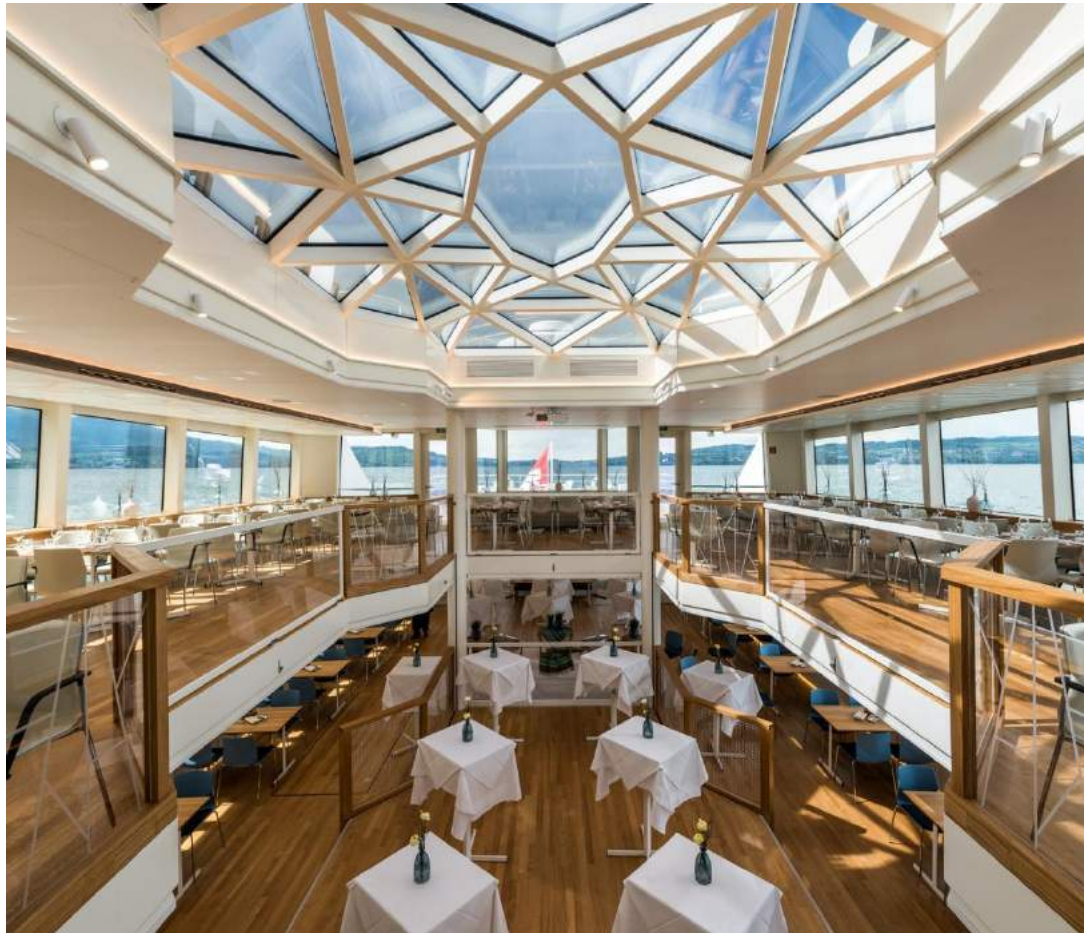




# Boat charter on Lake Lucerne.



**Switzerland.**  
by train, bus and boat.



Seating capacity	Route/region
Assignment of boat by SGV according to group size	Lake Lucerne / Lucerne

Equipment SGV events	Food/catering
<ul style="list-style-type: none"> <li>▪ One supervisor on board</li> <li>▪ Seminar or concert seating on one deck</li> <li>▪ Standard seating on the other deck</li> <li>▪ Standard technical equipment (1 beamer, 1 projector screen, 1 flip-chart, 1 pin board, 1 presenter's case)</li> <li>▪ Additional technical equipment can be organised on request against additional charge</li> </ul>	<p>With package bookings including lunch, the meal can be taken either on the harboured seminar boat or on the lunch boat (public scheduled boat).</p>



# Sitting coaches.



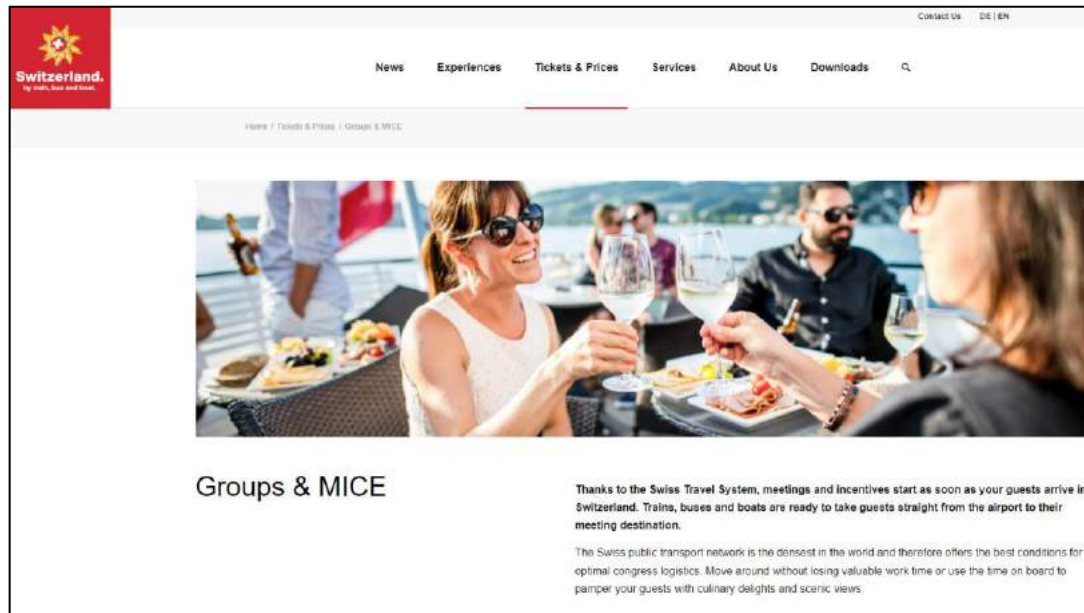
**Switzerland.**  
by train, bus and boat.

Seating capacity	Route/region	
60 seats in 1st class & 80 seats in 2nd class / total capacity as special train: up to 1,000 seats	Available attached to a train as extra coach, in combination with other coaches, or as special train with individual timetable and travel route	
Equipment	Food/catering	
<ul style="list-style-type: none"> <li>▪ Public address system with microphone</li> <li>▪ CD and USB connections</li> <li>▪ CD player</li> <li>▪ Depending on coach type: window tables and tables with arm rests and power outlets available</li> <li>▪ Air conditioning</li> </ul>	Catering by railway caterer "Elvetino" with minibar; more extensive catering possible with a salon coach including kitchen	



# MICE.

- More content and information on [mystsnet.com/mice](http://mystsnet.com/mice)
- Theme text available



The screenshot shows the Switzerland website's navigation menu with options like News, Experiences, Tickets & Prices, Services, About Us, and Downloads. Below the menu is a large image of people dining on a boat. The text below the image reads: "Groups & MICE. Thanks to the Swiss Travel System, meetings and incentives start as soon as your guests arrive in Switzerland. Trains, buses and boats are ready to take guests straight from the airport to their meeting destination. The Swiss public transport network is the densest in the world and therefore offers the best conditions for optimal congress logistics. Move around without losing valuable work time or use the time on board to pamper your guests with culinary delights and scenic views."

Theme text



## Charter offers for seminars & conferences.

With Swiss Travel System AG and the unforgettable charter experiences of our partners, meetings and incentives can start even on the journey to the destination. Trains, buses and boats are ready and waiting to take foreign guests from the airport to their meeting places.

## Lake Lucerne Cruises.



The gorgeous natural setting of the Lake Lucerne area has inspired many great minds – Friedrich Schiller and Mark Twain among others. Associates or business partners are literally brought on board the same boat here. Participants benefit both from creative brainstorming aided by the beautiful backdrop and from ideal accessibility in the immediate vicinity of Lucerne station.

Seating capacity	Route/region	Equipment SGV events	Food/catering
Assignment of boat by SGV according to group size	Lake Lucerne / Lucerne	<ul style="list-style-type: none"> <li>One supervisor on board</li> <li>Seminar or concert seating on one deck</li> <li>Standard seating on the other deck</li> <li>Standard technical equipment (1 beamer, 1 projector screen, 1 flip-chart, 1 pin board, 1 presenter's case)</li> <li>Additional technical equipment can be organised on request against additional charge</li> </ul>	With package bookings including lunch, the meal can be taken either on the harboured seminar boat or on the lunch boat (public scheduled boat).

## Motor vessel Diamant.



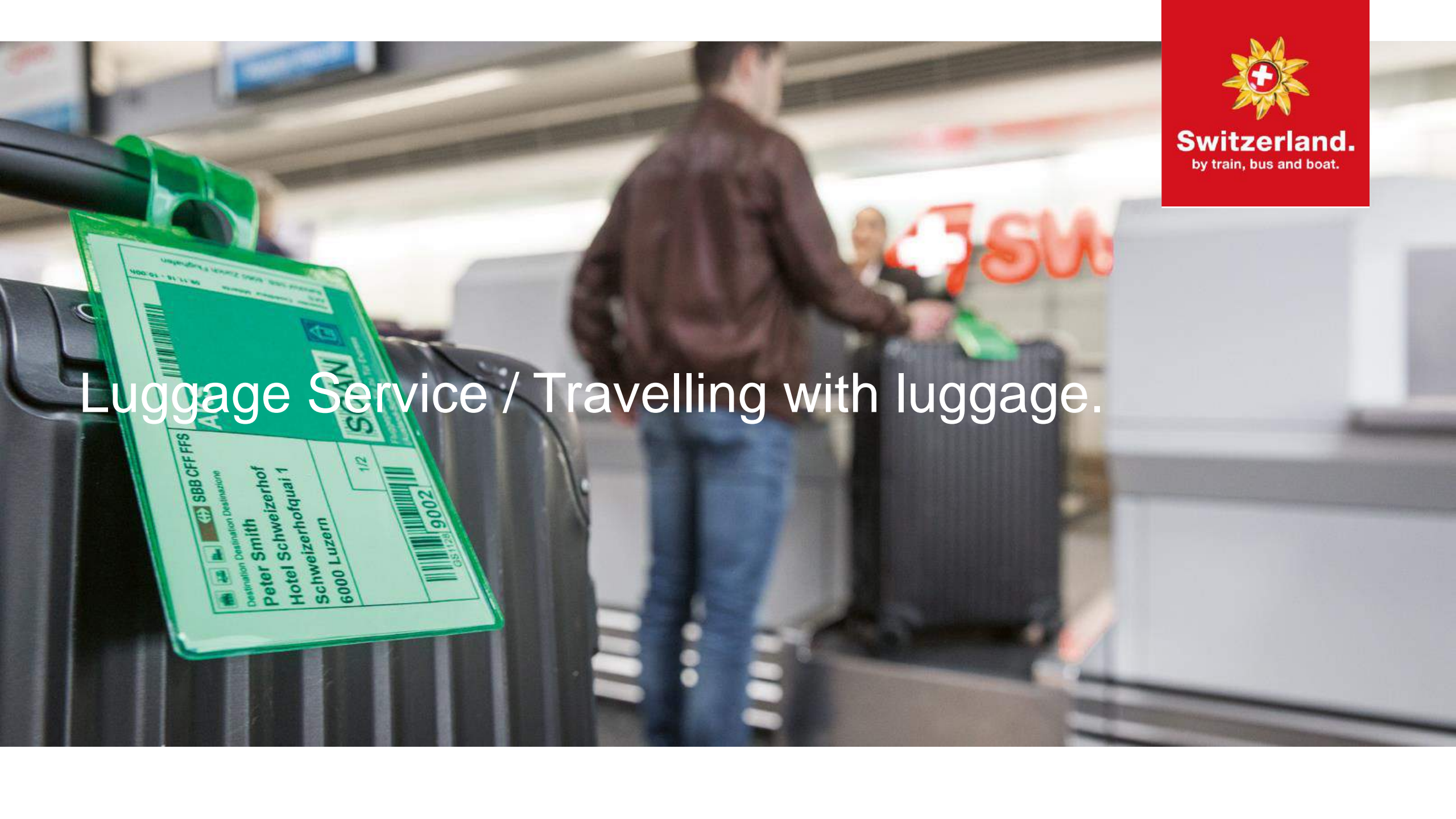
Underwater view, a lake-water footbath and the inner gallery with its impressive glass dome: This boat is unsurpassed when it comes to technological finesse and luxury. In addition, it sets new standards as Switzerland's first climate-neutral regular-service boat.

Seating capacity	Route/region	Equipment	Food/catering
400 banquet seats	Lake Lucerne	<ul style="list-style-type: none"> <li>Public address system</li> <li>Radio/ CD</li> <li>iPod</li> <li>Wireless microphone</li> <li>Presentation infrastructure</li> </ul>	Yes

Swiss Travel System AG  
Lagerstrasse 33, 8004 Zürich, mystsnet.com, e-mail [media@swisstravelsystem.com](mailto:media@swisstravelsystem.com)







**Switzerland.**  
by train, bus and boat.

Luggage Service / Travelling with luggage.

UNIVERSITÄT ZÜRICH  
100-01 - 01 11 90  
SBB  
SBB CFF FFS  
Destination Destination  
Peter Smith  
Hotel Schweizerhof 1  
Schweizerhofquai 1  
6000 Luzern  
1/2  
9002  
GS11251

# Overview Luggage Services.



**Switzerland.**  
by train, bus and boat.

Luggage product		Timings and prices			Offer available at
Luggage transportation abroad – Switzerland		Delivery on arrival day	Delivery one day after arrival	Delivery two days after arrival	
1a	Flight luggage foreign airport to station	–	CHF 24 per item	–	ca. 20 railway stations
1b	Flight luggage foreign airport to station	–	–	CHF 24 per item	ca. 160 railway stations
1c	Express flight luggage foreign airport to station	CHF 24 per item + 30 flat rate	–	–	19 railway stations
1d	Flight luggage foreign airport to door (hotel)	see <a href="https://airportr.com">https://airportr.com</a>			

Luggage transport within Switzerland		Delivery the same day	Delivery the next day	Delivery after two days	
3	Express luggage door to door	CHF 12 per item + 73 flat rate	–	–	ca. 20 tourist destinations

Luggage transportation Switzerland – abroad		Drop-off/handover the morning of flight departure	Drop-off/handover one day before flight departure		
4a	Flight luggage station to Zurich Airport	–	CHF 24 per item	–	ca. 160 railway stations
4b	Express flight luggage station to Zurich Airport	CHF 24 per item + 30 flat rate	–	–	6 railway stations
4c	Flight luggage door to foreign airport with luggage check-in	see <a href="https://airportr.com">https://airportr.com</a>			

\* maximum weight per piece of luggage 23 kg



# Overview destinations.



**Switzerland.**  
by train, bus and boat.

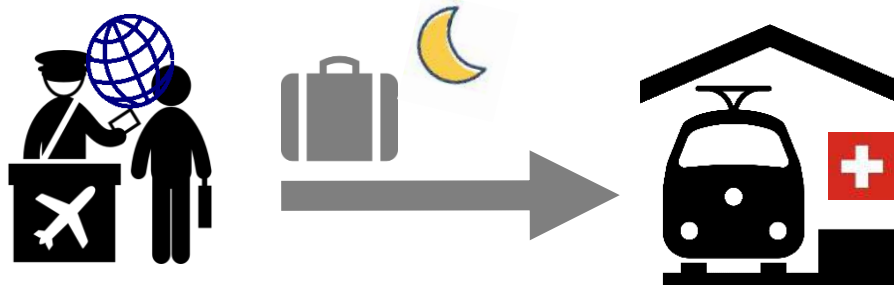
Luggage product		Operation Points	
1a	Flight luggage foreign airport to station with delivery one day after arrival	Arosa Basel Bern Brig Chur Davos Platz Engelberg Grindelwald Gstaad Interlaken Ost / West	Klosters Lausanne Lauterbrunnen Luzern Mürren St. Moritz Wengen Zermatt Zürich
1b	Flight luggage foreign airport to station	ca. 160 railway stations	
4a	Flight luggage station to Zurich Airport		
1c	Express flight luggage foreign airport to station	Arosa Basel Bern Brig Chur Davos Platz Engelberg Grindelwald Gstaad Interlaken Ost / West	Klosters Lausanne Lauterbrunnen Luzern Mürren St. Moritz Wengen Zermatt Zürich
3	Express luggage door to door	Andermatt Basel Bellinzona Bern Brig Chur Davos Genf Glattbrugg Grindelwald Interlaken Klosters Kloten	Lausanne Lauterbrunnen Locarno Lugano Luzern Montreux Opfikon St. Moritz Wengen Wilderswil Zermatt Zürich

Luggage product		Operation Points	
4b	Express flight luggage station to Zurich Airport	Grindelwald Interlaken Ost Lauterbrunnen Mürren Wengen Zermatt	
1d	Flight luggage foreign airport to door (hotel)	see <a href="https://airportr.com">https://airportr.com</a>	
4c	Flight luggage door to foreign airport with luggage check-in		

# Luggage transport to the railway station.



**Switzerland.**  
by train, bus and boat.



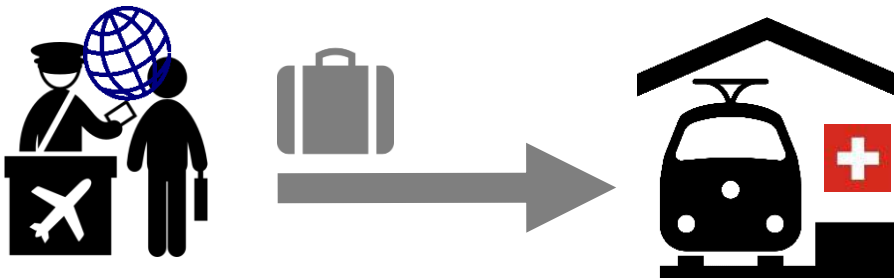
## “Flight luggage foreign airport to station”

Delivery one day after arrival

- Price: CHF 24 per item
- Destinations: 20 railway stations

Delivery two days after arrival

- Price: CHF 24 per item
- Destinations: approx. 160 railway stations



## “Express flight luggage foreign airport to station”

- Delivery on arrival day
- Price: CHF 24 per item + CHF 30 flat rate
- Destinations: 19 railway stations

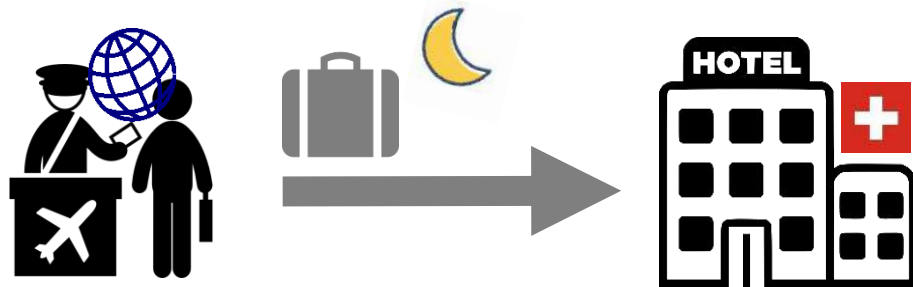
**Drop-off luggage at check-in abroad:** From any airport with any airline worldwide, only via Zurich Airport



# Luggage transport to the door/hotel.

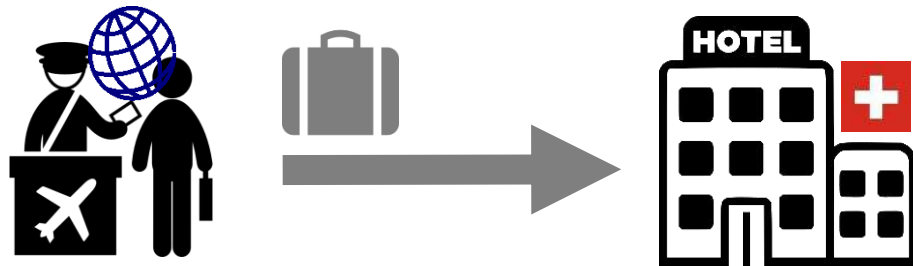


**Switzerland.**  
by train, bus and boat.



## “Flight luggage foreign airport to door”

- Customers can book directly via the [AirPortr](#) platform
- Queries for times, prices and locations via the AirPortr platform
- From CHF 45 depending on distance, items of luggage and delivery time

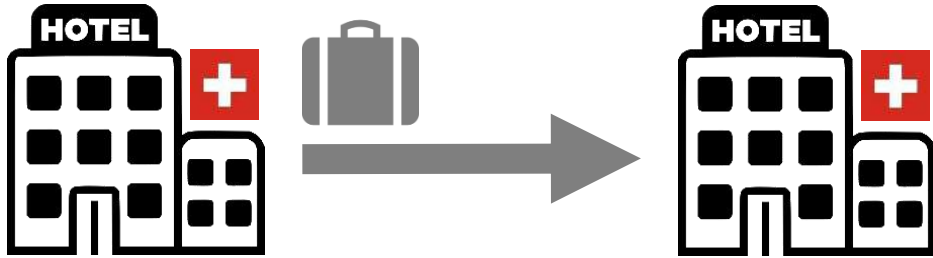


**Drop-off luggage at check-in abroad:** Available with SWISS, Edelweiss, British Airways and other selected airlines, only via Geneva or Zurich Airport

# Luggage transport within Switzerland.



**Switzerland.**  
by train, bus and boat.



## “ Express luggage door to door”

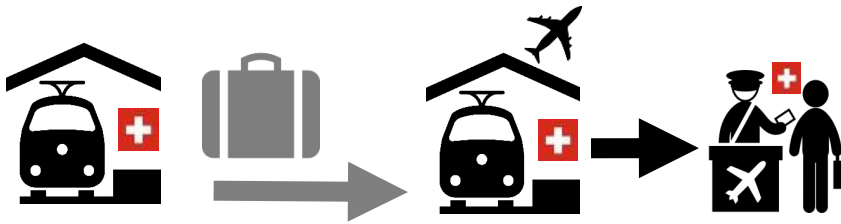
- Delivery the same day
- Price: CHF 12 per item + CHF 73 flat rate
- Destinations: approx. 20 tourist destinations (except car-free)



# Luggage transport from Switzerland.



**Switzerland.**  
by train, bus and boat.

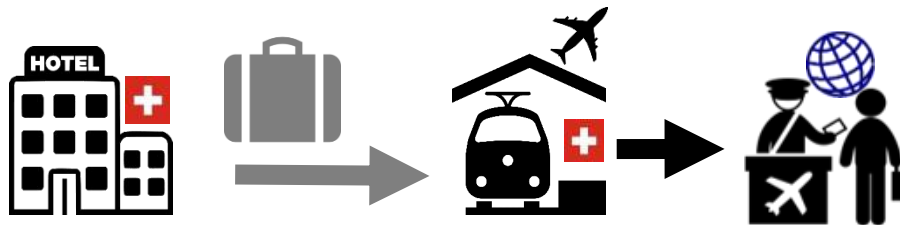


## “Flight luggage station to Zurich airport”

- Registration one day before flight departure
- Price: CHF 24 per item
- Destinations: approx. 160 railway stations

## “Express flight luggage station to Zurich airport”

- Registration on the morning of flight departure
- Price: CHF 24 per item + 30 flat rate
- Destinations: 6 railway stations



## “Flight luggage door to foreign airport”

- Customers can book directly via the AirPortr platform
- Queries for times, prices and locations via the AirPortr platform
- From CHF 45 depending on distance, items of luggage and delivery time

**Drop-off luggage at check-in in Geneva or Zurich:** Available with SWISS, Edelweiss, British Airways and other selected airlines



**Schweiz.**  
mit Bahn, Bus und Schiff.

# Express group luggage door to door.

- For groups from 10 persons with a maximum of 50 pieces of luggage
- **Collection:** between 07.00h and 09.00h (Zurich Airport until 12.30h)
- **Delivery:** by 19.30h the same day between any Swiss address including Zurich Airport
- **Price per transport:** CHF 300 (net price without commission)
- **Booking:** is required at least five working days prior to transport date online via [sbb.ch](https://www.sbb.ch), via email [baggage@sbb.ch](mailto:baggage@sbb.ch) or telephone +41 (0)51 285 30 00



# Travelling with luggage: services at a glance.



**Switzerland.**  
by train, bus and boat.

## Luggage storage at the station

- Various lockers for different luggage sizes
- Rental period for lockers up to 72 or 96 hours, depending on the station
- Rent payable with coins or credit card
- Bulky luggage can be deposited at the luggage counter (note opening hours of counters)
- Thanks to ramps and elevators, travellers get comfortably from A to B anywhere at the station



Family at the counter with luggage

# Travelling with luggage: services at a glance.



**Switzerland.**  
by train, bus and boat.

## With luggage on the train

- Low-floor trains guarantee easy access
- Ample space to stow the luggage on the train:
  - luggage racks
  - between the seats
  - above the seats



Giruno luggage storage space in 1st class





**Switzerland.**  
by train, bus and boat.

# Swiss Travel System Excellence E-Learning.



Swiss Travel System  
**EXCELLENCE**

Bernina Express at Lago Bianco, Grisons



# The most important in brief.



**Switzerland.**  
by train, bus and boat.

- The interactive e-learning program:  
**Heidi & Peter take you on a learning journey** across the Swiss Travel System
- Familiarize yourself with the modes of public transport and **win attractive prizes**
- This allows you year after year to playfully broaden your public transport knowledge and **support your clients in a professional and competent manner.**







**Switzerland.**  
by train, bus and boat.

# 5 reasons why you should register.

- 1. Complete overview of Swiss Travel System:** All essential information on Swiss public transport in one user-friendly tool.
- 2. Expert advice:** As a Swiss Travel System Excellence Expert, you can advise your customers competently.
- 3. Up to date:** With regular updates, you're always up to speed.
- 4. Free:** The program is not only easy to access and use, but also free of charge.
- 5. Win:** Earn an Expert Diploma and get a chance to personally experience Switzerland.

# The most important in brief.



**Switzerland.**  
by train, bus and boat.



- Learning is made easy and fast with a **modular structure**
- The program is **web-based** and **accessible** from anywhere in the world **at any time**
- Available languages: **German, English and Chinese Simplified**
- Jump on the bandwagon and register now: **[mystsnet.com/elearning](https://mystsnet.com/elearning)**



# Contents.



**Switzerland.**  
by train, bus and boat.

- It is the **only** e-learning program worldwide that maps the entire public transport system of a country
- It is organized in **several courses** (*Basics, Advanced, Expert, News*) with a total of almost 30 modules. These range from premium panoramic trains to tickets and passes to services at the train station
- Your level of knowledge will be tested at the end of each course
- After successfully completing the tests, you will become “Swiss Travel System Excellence Expert” and receive a diploma.



# How it works.



**Switzerland.**  
by train, bus and boat.



## **Sign up**

Step aboard the Swiss Travel System Excellence Program.



## **Start learning**

Select a module of your choice and begin your learning journey.



## **Check your current progress**

Take tests and compare your current learning score to that of other participants.



## **Get rewarded**

Receive the diploma as “Swiss Travel System Excellence Expert”! On top of that, you can win attractive prizes.



# Excellence Talk - Stories that move us.



**Switzerland.**  
by train, bus and boat.

## Innovative news format

- Exciting stories
  - Interviews with industry partners
  - Exclusive insights about the Excellence E-Learning
  - Quiz afterwards
- 
- Topics of the series:  
Grand Train Tour of Switzerland, Luzern–Interlaken Express, Schilthorn, Glacier Express, Gotthard Panorama Express and more



Join Heidi & Peter and start your learning journey.



**Switzerland.**  
by train, bus and boat.





We're at your service.



**Switzerland.**  
by train, bus and boat.

Luzern-Engelberg Express in Grafenort, Central Switzerland



# INSIDE TRACK – Sales Guide



**Switzerland.**  
by train, bus and boat.



- Gives an overview of the highlights of the Swiss Travel System
- Information about the ticket range, travel from neighbouring countries and baggage services
- With links to detailed information pages from partners and mystsnet.com
- Browse Sales Guide online: [mystsnet.com/about-us/infos-for-agents](https://mystsnet.com/about-us/infos-for-agents)



# Swiss Travel System Media & Trade Platform.



**Switzerland.**  
by train, bus and boat.



Travelling can be so easy.

- [mystsnet.com](https://mystsnet.com)
- Information about STS products & services as well as all STS tickets and passes
- Current news around the Swiss Travel System
- Download centre with factsheets, theme texts, pictures, videos, maps and logos
- Information about STS AG and our team
- Newsletter for the travel trade industry

I'm at your service.



**Switzerland.**  
by train, bus and boat.



**Swiss Travel System.**



**Andreas Nef**  
Market Manager UK, South Korea,  
Australia, Japan & UAE

Swiss Travel System AG  
Lagerstrasse 33  
CH-8004 Zürich  
[mystsnet.com](http://mystsnet.com)

+41 (0)79 750 88 89  
[andreas.nef@swisstravelsystem.com](mailto:andreas.nef@swisstravelsystem.com)